

LABOUR

This section presents data in respect of employment, wages and earnings, industrial disputes, industrial injuries and labour training.

Attempts have been made to cover statistics regarding employment under the public and private sectors as far as figures are available.

Table 36.1

This table relates to all establishments under Central Government, State Governments, Quasi-Government Organisations and Local Bodies. The information is based on the data collected by the Employment Exchanges as part of their programme for collection of Employment Market Information on quarterly basis. The information on the number of persons employed at the end of every quarter is compiled by the Directorate General of Employment & Training through the Employment Market Information (E M I) Programme. The programme provides, inter alia, for collection, of employment data in the organised sector, i.e. the entire public sector and non-agricultural establishments employing 10 or more persons in the private sector. The data from the private sector establishments employing 25 or more persons are collected under the Employment Exchanges (Compulsory Notification of Vacancies) Act, 1959. The rest (employing 10 to 24 workers) are being collected from March, 1966 onwards voluntarily from the employers. The non-response is generally small but employment in such establishments is estimated by the local Employment Officers on the basis of data furnished for previous quarters and included in the overall estimate of employment.

The figures do not cover Arunachal Pradesh, Lakshadweep, Dadra & Nagar Haveli and Sikkim as the EMI data collection programme has not so far been extended to these States/Union Territories. From 1975, data are based on the National Industrial Classification (NIC)-1970.

Table 36.2

This table relates to employment in Railways. As the regrouping of Government Railways was completed on 14th April 1952, zone-wise information regarding employment in Railways is available only from that year. Information regarding employment in Production Units includes Chittaranjan Locomotive Works and Integral Coach Factory from 1955, Diesel Locomotive Works, Dandakarnya- Bolangir Kiriburu Railway Project from 1961, Railway Electrification Project from 1966, Wheel & Axle Plant from 1979, Diesel Component works from 1987 included earlier under Railway Board and other Railway office from 1980, Rail Coach Factory from 1987 onwards. The employment in Ganga Bridge Project, which was shown under Works and Projects (Production Units) prior to 1960-61, is now under Eastern Railway as these projects were merged with Eastern Railway from 1960-61 and the employment in Dandakarnya-Bolangir- Kiriburu Railways Project and Railway Electrification Project which were shown under Works and Projects (Production Units) upto 31-3-1968, is now shown under South Eastern Railway as these projects were merged with the South Eastern Railway with effect from 1-11-1968. Besides, employment data for Railway Board and other Railway Offices including Metropolitan Transport Project (Railways), are also given in this table. Data for non-Government Railways have been discontinued from 1978, whereas the figures for Railway Protection Special Force personnel were included from 1977 onwards. The employment data include Groups I to IV (permanent and temporary) employees.

LABOUR - Contd.

Tables 36.3 to 36.6

The statistics in these tables relate to factories as defined under the Factories Act, 1948. This Act covers factories employing 10 workers or more with the aid of power, 20 workers or more without the aid of power and factories specially brought under the purview of the Act by the State Governments. The statistics of employment relate to persons employed directly or through any agency, whether for wages or not, in any manufacturing process or in cleaning any part of the machinery or premises used for a manufacturing process or any other kind of work incidental to or connected with the manufacturing process or the subject of manufacturing process. Thus the definition of worker as laid down in the Act does not cover manual workers alone but some clerical and supervisory personnel as well.

The employment figures represent "average daily employment". The figures of average daily employment are furnished by each factory by dividing the total attendance (man-days worked) during a year by the total number of working days during the year. Thus, the measure of employment is based on actual attendance and not on the physical number of persons on roll. In the case of non-responding factories, estimated figures have been given. The reported or estimated figures of average daily employment for all factories belonging to an industry group or a State are summed up to obtain the total average daily employment for an industry group or a State.

Data from 1956 onwards relate to re-organised States and Union Territories and include estimated employment in factories not submitting returns whereas earlier figures relate to factories submitting returns only.

Table 36.3 presents industry-wise figures of employment in Govt. and Local Fund factories and in other factories. As the figures for the years 1971 onwards are being built up for the groups of industries according to NIC 1970, these figures have been given against the group of industries under old classification considered nearest to the new group. Table 36.4 provides Statewise data for total employment in all factories.

Table 36.5 and 36.6 present data regarding employment in factories according to the NIC 1987. Table 36.5 provides all-India figures upto 3 digit-level as per NIC-1987 for the years 1991,1996,1997&1998; and as per NIC 1998 for the year 2000. Table No. 36.6 gives statewise data according to major groups of industries for the latest available year as per NIC 1998.

Table 36.7

Average daily employment in factories according to three broad age-categories and sex is shown in this table. The information relates to only factories submitting returns. The Factories Act,1948 defines adult, adolescent and child as follows:

- (i) Adult is one who has completed 18 years.
- (ii) Adolescent is one who has completed 15 years but not 18 years.
- (iii) Child is one who has not completed 15 years (children below 14 years are not permitted to work).

LABOUR - Contd.

Table 36.8

This table presents estimated average daily employment in "Working Factories" using power. The factories employing 10 or more workers and using power are covered under section 2m(i) of the Factories Act, 1948. The statistics presented in the table relate to factories registered under this section.

Table 36.9

The table gives information regarding average daily number of workers employed in mines. The mineral-wise break-up of employment in mines is given for 12 important minerals. The method of computation of average daily number of workers employed is the same as given above for tables 36.3 to 36.6. Under the statutory provisions of Mines Act, 1952 the Director General of Mines Safety collects information regarding number of persons employed in mines and quarries (except those specially exempted by Central Govt.). Upto 1951, the information regarding employment in mines was collected under the Indian Mines Act, 1923 and thereafter it was collected under the Mines Act, 1952. The scope of the Act changes slightly from time to time. For example, by a Notification of March, 1955, a number of hitherto exempted stone, lime-stone and sand excavations were brought under the purview of the Act. The provisions of the Act were extended to the state of Jammu & Kashmir from the 15th August, 1968.

Table 36.10

This table shows the average daily number of persons employed in tea, coffee and rubber estates. The Directorate of Economics and Statistics, Ministry of Agriculture collects figures of employment from coffee and rubber estates every year through State Governments. The data for employment in tea coffee and rubber plantations are supplied respectively by the Indian Tea Board, Indian Coffee Board and the Indian Rubber Board. All workers in garden and outside are covered. According to instructions laid down, each estate furnishes figures of 'average daily employment' by dividing the total man-days worked during a year by a standard figures of 300 working days. The figures of "average daily employment" for individual estates are added up to obtain the 'average daily employment' for each industry viz., tea, coffee and rubber. In the case of small estates of 20 hectare size and below, the employment is estimated by conducting sample studies

Table 36.11

Statistics of employment in respect of shops, commercial establishments and restaurants registered under the Weekly Holidays Act, 1942 and Shops and Commercial Establishments Act in the various States are given in this table. These Acts are in force only in certain urban areas covering municipal areas, towns and cantonments, and hence the statistics are limited to shops and commercial establishments in such areas. The employment data are compiled by the State authorities either from the annual returns or from the figures furnished by the employers at the time of registration of the unit under the Act. In some cases the figures are collected specially by the Inspectors appointed under the Acts directly from the individual establishments. The number of shops may be more than the number of workers employed therein due to the fact that shops not employing any worker but run independently by the owners themselves are also covered by the Act.

LABOUR - Contd.

Table 36.12

The table shows the number of applicants on the live-register of Employment Exchanges. The Employment Exchanges which are under the control of Director General of Employment and Training, Ministry of Labour and Employment, register names of the persons seeking employment and help them to secure employment. It gives State wise data by broad occupational groups based on revised National Classification of Occupations, 1968.

Tables 36.13 to 36.15

These tables present data about wages and earnings of factory workers in India. The data are collected under the Payment of Wages Act, 1936. Earnings include basic wages, dearness allowances, overtime payment, other cash allowances including production of incentive bonus, efficiency bonus, money value of concessions, annual or prepaid bonus and arrears. Since 1983, the Payment of Wages Act, 1936 is applicable only to employees earning less than Rs.1600 per month. The ceiling has been raised to Rs.6500/- w.e.f. 09.11.2005.

Table 36.13 gives State-wise data regarding total earnings of factory workers. Figures in this table exclude information about railway workshops but include those for Defence installations. Table 36.14 & 36.15 present data regarding per capita annual earnings of factory workers by States and Industry code respectively in manufacturing sectors.

Table 36.16

This table presents wages and earnings of mining labour in coal and non-coal mines. The data for coal mines relate to average weekly earning of miners and loaders in December each year whereas those for other mines relate to average weekly earnings of miners and loaders for the quarter ending in December each year. The average weekly cash earnings in coal mines are computed by dividing the total payments during any complete working week in the month of December by the average daily attendance during that week. For other minerals these are computed by dividing the earnings in the month of December for a week by six.

Tables 36.17

This table gives statistics of injuries in factories. Under the Factories Act, 1948, statistics of industrial accidents due to which affected persons are prevented from attending to work for a period of 48 hours or more, immediately following the injury, are required to be reported to the Factory Inspectors. For statistical purposes, the number of injuries is given by the number of persons receiving injuries as a result of an accident and this number is more than the actual number of accidents because one accident may result in injuries to more than one person. The data on injuries presented in the table relate only to factories submitting returns. No estimates of injuries can be made for the defaulting factories. The incidence rate of injuries is calculated by dividing the total number of injuries by the corresponding average daily number of workers employed in the factories submitting returns.

LABOUR - Contd.

Tables 36.18

This table shows number of accidents and number of persons receiving injuries in mines. The data are collected under the Mines Act, 1952, which has been recently amended as mines (Amendment) Act, 1953. Some changes in the definition of serious accident have been brought in. Accidents have been classified into fatal, and serious. A serious accident is one where one or more persons have received "serious bodily injury", which means "any injury which involves, or in all probability will involve, the permanent loss of any part or section of a body, or the permanent loss of or injury to the sight or hearing or any permanent in capacity or the fracture of any bone or one or more joints or bones of any phalanges of hand or foot.

Table 36.19

The tables shows the State wise distribution of number of disputes, workers involved and number of man-days lost on account of industrial disputes resulting in work-stoppages. The data are collected on a voluntary basis by the State authorities and the Regional labour commissioners (Central) who furnish consolidated returns to the Labour Bureau. The figures of number of workers involved relate to the maximum number of workers involved on any day during the course of work-stoppage as known upto by the date of reporting.

The figures of man - days lost are calculated by adding up actual vacancies caused by the work stoppage on each working day. Scheduled holidays during the period of work stoppage are not taken into account in the calculation of man-days lost.

Table 36. 20

This table shows all-India figures of industrial disputes by causes of disputes.

Table 36.21

The data included in the table relate to compensated injuries under the Workmen's compensation Act, 1923 and are based on annual returns received under the Act from State Governments, Posts and Telecommunications Departments and Railway Board for different zonal railways. Under the Act, compensation is payable to workers employed in scheduled employment for injuries due to accident resulting in death or disablement for more than 3 days provided that it is not caused through the fault of the worker himself. As all the injuries are not compensated, the number compensated injuries do not reflect the total number of injuries occurring. Further many of the establishments covered by the Workmen's compensation Act fail to submit returns and hence information received by the State Authorities about the number of compensated injuries and the amount of compensation paid is incomplete. In establishments covered by the Employees State Insurance Act, compensation in respect of injuries is paid under that Act and not under the Workmen's Compensation Act. This limitation affects the trend and comparability of the statistics of compensated injuries.

LABOUR – Concl.

Table 36. 22

This table presents data on employment in insurance. The information upto the year 1974 - 75 was collected by the Central Statistical Organisation, Department of Statistics. From 1975 - 76 onwards, the information has been furnished by the Ministry of Finance in respect of Life Insurance Corporation and General Insurance Corporation but this excludes four State Insurance funds which account for less than half percent of total employment in the insurance sector.

Table 36.23

The table presents data on the number of banks and number of persons employed in the banking sector separately in respect of scheduled and non-scheduled banks and in regional rural banks and in the Reserve Bank of India. Information is collected by the Reserve Bank of India.

Table 36.24

These are two tables which give the number of persons employed in ports in India. The first one gives the staff strength in major, ports and the second one shows the data regarding number of dock workers registered with Dock Labour Board at major ports.

LABOUR

Table 36.1 - ESTIMATED EMPLOYMENT IN THE PUBLIC AND PRIVATE SECTORS
(As on 31st March)

('000 number)

Year/State/ Union Territory	Public sector				Private Sector			Grand total (Col.2 to Col.8)
	Central Govt.	State Govt.	Quasi Govt.		Local Bodies	Larger Estts.	Smaller Estts.	
			Central	State				
1	2	3	4	5	6	7	8	9
1990-91	3409.8	7112.9	3563.5	2658.3	2312.7	6783.4	892.4	26733.0
1996-97	3295.1	7485.1	3585.5	2949.7	2243.7	7706.4	963.3	28490.4
1997-98	3253.0	7458.1	3536.0	2924.9	2245.9	7821.1	926.9	28165.8
1998-99	3312.8	7457.6	3471.5	2913.9	2259.0	7769.9	928.3	28113.1
1999-00	3273.2	7459.6	3413.2	2912.5	2255.2	7719.2	926.8	27959.7
2000-01	3260.8	7424.6	3290.8	2900.7	2260.6	7708.5	943.2	27789.2
2001-02	3194.7	7383.8	3195.3	2824.4	2175.2	7508.5	923.6	27205.5
2002-03	3133.3	7366.6	3177.1	2724.0	2178.6	7472.0	948.7	27000.3
2003-04	3027.4	7221.9	3302.8	2519.1	2125.6	7233.9	1012.0	26442.7
2004-05	2938.5	7201.9	3284.7	2463.6	2117.9	7489.1	962.7	26458.4
2004-05								
State:								
Andhra Pradesh	212.2	450.5	175.3	315.3	242.5	571.1	75.2	2042.0
Assam	74.3	312.3	80.3	51.8	12.9	572.0	8.6	1112.2
Bihar	102.6	276.3	50.7	41.1	24.0	27.3	5.2	527.1
Chattisgarh	43.0	135.4	98.1	19.8	10.9	29.2	2.5	339.0
Goa	6.2	45.5	13.0	4.1	1.2	39.2	2.7	111.9
Gujarat	116.5	183.6	113.0	131.5	287.5	686.6	174.8	1693.6
Haryana	25.2	246.5	39.2	64.5	14.6	236.6	21.4	647.9
Himachal Pradesh	17.4	172.7	18.7	45.9	3.8	54.7	4.2	317.5
Jammu & Kashmir	28.0	147.9	7.9	9.4	6.4	9.5	1.0	210.1
Jharkhand	77.4	100.0	686.2	16.1	12.0	139.0	11.4	1042.0
Karnataka	98.5	570.9	167.9	156.8	65.2	727.4	75.4	1861.9
Kerala	76.8	279.9	100.7	130.7	26.8	412.6	112.3	1139.8
Madhya Pradesh	148.6	489.5	155.9	69.6	51.7	144.3	11.4	1071.1
Maharashtra	395.4	485.4	375.5	228.1	653.3	1318.1	85.2	3540.9
Manipur	4.5	61.9	4.2	3.4	4.0	2.0	0.6	80.6
Meghalaya	16.6	37.7	7.8	7.7	2.8	7.2	2.1	81.9
Mizoram	0.8	33.5	1.3	1.5	3.0	1.4	-	41.5
Nagaland	4.6	59.2	2.4	1.7	0.3	2.2	1.9	72.3
Orissa	73.6	381.0	98.9	87.8	18.5	81.5	8.7	750.1
Punjab	70.2	266.9	60.6	92.5	29.8	231.5	21.6	773.1
Rajasthan	130.9	550.1	73.9	97.5	80.6	200.5	47.2	1180.5
Tamil Nadu	235.8	587.2	176.4	336.8	176.6	634.6	131.3	2278.8
Tripura	2.0	92.6	4.2	2.8	8.9	12.5	0.4	123.3
Uttar Pradesh	353.9	668.5	172.1	344.9	111.0	388.9	48.6	2087.9
Uttarakhand	25.9	100.6	32.6	52.6	12.2	34.1	3.2	261.3
West Bengal	361.3	275.0	391.9	103.2	155.0	715.9	36.5	2038.8
Union Territory:								
A. & N. Islands	5.1	25.9	1.4	0.9	1.7	2.3	0.5	37.7
Chandigarh	15.8	22.0	15.6	2.1	5.0	22.5	6.6	89.0
Delhi	210.1	120.1	156.9	34.7	93.1	157.1	59.2	831.2
Daman & Diu	0.5	1.3	-	-	0.2	8.9	3.6	14.5
Pondicherry	4.9	22.2	2.1	9.0	2.2	17.6	-	58.0

Source: Directorate General of Employment and Training,
Ministry of Labour & Employment

Larger Estts. - Establishments employing 25 or more workers.

Smaller Estts.- Establishments employing 10 to 24 workers.

Note : Total may not tally due to roundig off of figures.

LABOUR

Table 36.2 - EMPLOYMENT IN RAILWAYS

Year	Zones									
	Central	Eastern	East Central*	East Cost*	Northern	North Central*	North Eastern	North East Frontier	North Western*	South- ern
	1	2	3	4	5	6	7	8	9	10
1990-91	227024	228992	244808	..	107737	84377	..	146910
1994-95	217094	219168	245672	..	99209	82972	..	142937
1995-96	216947	214284	244132	..	97816	81799	..	140366
1996-97	219286	211466	249281	..	95068	81123	..	139300
1997-98	221591	213256	247071	..	95959	80046	..	136654
1998-99	221289	213374	247903	..	97091	81697	..	136585
1999-00	219510	212972	247321	..	97812	81496	..	136463
2000-01	213199	208237	242747	..	97570	79390	..	133587
2001-02	208024	204376	236973	..	95233	76508	..	130579
2002-03	204707	195932	231923	..	91957	75159	..	126992
2003-04	126813	133613	92165	43985	164304	72592	64158	74085	59690	106844
2004-05	124757	131513	84180	44450	161906	79039	63769	72685	57669	106258
2005-06	122783	129900	8252	44920	160332	79061	61539	73740	58482	104865

Year	Zones-Concl'd.						Pro- duction Units	Railway Board & Other Railway Offices	Grand total
	South Central	South Eastern	South East Central*	South Western*	Western	West Central*			
	12	13	14	15	16	17			
1990-91	128984	204167	209530	..	53080	19382	1654991
1994-95	126136	202700	196735	..	54017	18356	1604996
1995-96	125634	203403	193252	..	53382	18631	1589646
1996-97	126884	201860	190407	..	53082	19071	1586828
1997-98	126013	199189	189547	..	52384	20744	1582454
1998-99	126343	198884	186010	..	51911	21026	1582113
1999-00	125706	198990	186998	..	52282	21352	1580902
2000-01	121820	197525	182916	..	51241	21153	1549385
2001-02	119410	195725	178210	..	49885	19893	1514816
2002-03	116627	194055	171971	..	48074	18487	1475884
2003-04	95919	98390	40336	33373	112842	61178	46521	18620	1445428
2004-05	95009	95830	42722	33654	110447	60401	45596	14504	1424389
2005-06	93968	92867	43245	34043	109338	58907	45079	15113	1412434

Source: Railway Board
Ministry of Railways

(*) These zones functional w.e.f. 1st April, 2003.

LABOUR

Table 36.3 - FACTORY EMPLOYMENT

('000 no.)

Year	All factories (Govt. and others) (cols.3+11)	Total (cols. 4-10)	Public Sector							Rest
			Textiles	Printing publishing & allied industries	Manufacture of machinery	Electrical machinery apparatus, appliances & supplies	Transport equipment	Electricity, gas and steam		
1	2	3	4	5	6	7	8	9	10	
1991	8754	2143	298	88	131	153	182	141	1150	
1993	9095	2162	288	97	133	137	183	146	1178	
1994	9137	2115	276	91	261	174	147	1166	-	
1995	8829	1954	240	79	245	-	166	148	1076	
1996	8881	1872	234	77	240	-	172	149	1000	
1997	8018	1565	179	71	188	-	116	139	872	
1998	8318	1633	183	76	202	-	109	119	944	
1999	8555	1612	154	55	99	23	202	120	959	
2000	4226	798	79	38	40	22	74	70	475	
2001	5732	903	90	44	54	18	109	81	507	
2002	6330	965	85	42	67	24	104	80	563	
2003(P)	4927	737	70	31	45	21	78	72	420	

Year	Total (Col. 12-20)	Private Sector								
		Food and beverages	Tobacco	Textiles	Chemical and chemical products	Non-metallic mineral products	Basic metal industries	Manufacture of machinery	Transport equipment	Rest
1	11	12	13	14	15	16	17	18	19	20
1991	6611	1047	135	1555	508	566	446	397	309	1648
1993	6933	1097	131	1664	552	608	470	416	308	1687
1994	7022	1134	129	1676	556	614	471	708	312	1422
1995	6875	1148	129	1475	583	602	427	713	325	1473
1996	7000	1175	136	1451	614	616	464	775	343	1435
1997	6453	1161	88	1412	564	566	399	619	296	1348
1998	7178	1225	93	1597	612	614	452	750	324	1511
1999	6943	1084	64	1238	677	593	405	360	253	2269
2000	3428	676	36	516	256	267	193	174	85	1225
2001	4830	753	34	853	546	323	261	125	100	1835
2002	5365	822	44	786	471	355	332	355	111	2089
2003(P)	4190	715	36	547	329	312	292	242	93	1624

Source: Labour Bureau Chandigarh, Ministry of Labour and Employment.

Note 1. The data reported in col.6 & 7 is combined for the year 1994 to 1997.

2. The data relates to the responding States/UTs.

3. Total may not tally due rounding off of the figures.

LABOUR

Table 36.4 - FACTORY EMPLOYMENT BY STATES(1)

(Employment in '000 no.)

State/ Union Territory	1991		2001		2002		2003(P)	
	Total Number of Fact- ories	Average Daily Employ- ment	Total Number of Fact- ories	Average Daily Employ- ment	Total Number of Fact- ories	Average Daily Employ- ment	Total Number of Fact- ories	Average Daily Employ- ment
1	2	3	8	9	8	9	8	9
State:								
Andhra Pradesh	23020	686	29218	719	30762	731	27927	717
Assam	1734	112	1473	94	1554	96	1526	94
Bihar	42580#	483
Goa,Daman & Diu	262	21	644	38	695	42	696	45
Gujarat	14663	761	18010	748
Haryana	5267	255	8794	448	6303	361
Himachal Pradesh	1248	52
Jammu & Kashmir	651#	27
Karnataka	8168	795	9542	1084	9750	1003
Kerala	12038#	283
Madhya Pradesh	9700	524	7741	405	7806	392	7893	417
Maharashtra	24200	1225	28501	1253	28783	1227	28892	1216
Manipur	500	5
Meghalaya	55	3
Orissa	1911	142	1920	136	1899	133	1933	131
Punjab	11708	386	13439	408	13791	451	14109	462
Rajasthan	10802	267	9103	367	9341	363	9406	373
Tamil Nadu	15909	921	24097	1234	24811	1252
Tripura	982	35	1433	32	1481	32	1522	32
Uttar Pradesh	6356	571
West Bengal	8981#	906
Union Territory:								
A. & N.Islands	45	5	48	8	33	5
Chandigarh	456	16	486	15	494	15	484	14
D. & N. Haveli	50	2
Delhi	5178	249	6863	233
Pondicherry	1144	23	1872	54	1284	55	1421	55
Total	207608	8754	144800	5733	141085	6330	111895	4927

Source: Labour Bureau Chandigarh, Ministry of Labour and Employment

(1) The figures relate to estimated average daily number of workers employed.

(#) Estimated due to non-receipt of returns.

Notes: i) Data is based on the returns received.

ii) Totals may not tally due to rounding off of figures.

LABOUR

Table 36.5 - FACTORY EMPLOYMENT BY INDUSTRY GROUPS
AT THREE DIGIT LEVEL OF NIC 1998

Industry Code/Industry	2002		2003(P)	
	Number of Working Factories	Average Daily Employment ('000)	Number of Working Factories	Average Daily Employment ('000)
1	4	5	4	5
01 : AGRICULTURE , HUNTING AND RELATED SERVICE ACTIVITIES	3564	139	2660	95
011 Growing of crops; market gardening; horticulture	33	2	32	2
012 Farming of animals	12	@	8	@
013 Growing of crops combined with farming of animals (mixed farming).	-	-	-	-
014 Agricultural and animal husbandry service activities, except veterinary activities	-	-	2620	93
015 Hunting, trapping and game propagation including related service activities	3519	136	-	-
017	-	-	-	-
019	-	-	-	-
02 : FORESTRY, LOGGING AND RELATED SERVICE ACTIVITIES	1	@	1	@
020 Forestry, logging and related service activities	1	@	1	@
021	-	-	-	-
022	-	-	-	-
023	-	-	-	-
024	-	-	-	-
025	-	-	-	-
026	-	-	-	-
027	-	-	-	-
028	-	-	-	-
029 Forestry, logging and related service activities	1	@	-	-
05 : FISHING, OPERATION OF FISH HATCHERIES AND FISH FARMS; SERVICE ACTIVITIES INCIDENTAL TO FISHING	2	@	1	@
050 Fishing, operation of fish hatcheries and fish farms; service activities incidental to fishing.	2	@	1	@
10 : MINING OF COAL AND LIGNITE; EXTRACT OF PEAT	-	-	-	-
101 Mining and agglomeration of hard coal	-	-	-	-
102 Mining and agglomeration of lignite	-	-	-	-
103 Extraction and agglomeration of peat	-	-	-	-
11 : EXTRACTION OF CRUDE PETROLEUM AND NATURAL GAS; SERVICE ACTIVITIES INCIDENTAL TO OIL AND GAS EXTRACTION EXCLUDING SURVEYING	5	@	4	@
111 Extraction of crude petroleum and natural gas	4	@	3	@
112 Service activities incidental to oil and gas extraction excluding surveying	1	@	1	@
117	-	-	-	-
12 : MINING OF URANIUM AND THORIUM ORES	-	-	-	-
120 Mining of uranium and thorium ores	-	-	-	-
124	-	-	-	-
13 : MINING OF METAL ORES	1	1	-	-
131 Mining of iron ores	-	-	-	-
132 Mining of non-ferrous metal ores, except uranium and thorium ores	1	1	-	-
14 : OTHER MINING AND QUARRYING	928	9	986	27
140	-	-	-	-
141 Quarrying of stone, sand and clay	892	8	940	26
142 Mining and quarrying , n.e.c.	36	1	46	1
15 : MANUFACTURE OF FOOD PRODUCTS AND BEVERAGES	30404	906	26176	779
151 Production, processing and preservation of meat, fish, fruit vegetables, oils and fats.	4645	119	4159	113
152 Manufacture of dairy product	864	58	833	51
153 Manufacture of grain mill products, starches and starch products, and prepared animal feeds	19347	284	16774	250
154 Manufacture of other food products	3998	386	2905	3151
155 Manufacture of beverages	1550	58	1505	50
158	-	-	-	-

LABOUR

Table 36.5 - FACTORY EMPLOYMENT BY INDUSTRY GROUPS
AT THREE DIGIT LEVEL OF NIC 1998- Contd.

Industry Code/Industry	2002		2003(P)	
	Number of Working Factories	Average Daily Employment ('000)	Number of Working Factories	Average Daily Employment ('000)
1	4	5	4	5
16: MANUFACTURE OF TOBACCO PRODUCTS	1008	44	475	37
160 Manufacture of tobacco products	1008	44	475	37
17: MANUFACTURE OF TEXTILES	14639	871	9536	617
171 Spinning, weaving and finishing of textiles	11094	732	7704	530
172 Manufacture of other textiles	1486	71	993	57
173 Manufacture of knitted and crocheted fabrics and articles	2059	68	839	31
18: MANUFACTURE OF WEARING APPAREL; DRESSING AND DYEING OF FUR				
	3310	314	2095	220
181 Manufacture of wearing apparel,except fur apparel	3270	312	2051	198
182 Dressing and dyeing of fur; manufacture of articles of fur	40	1	44	1
19: TANNING AND DRESSING OF LEATHER; MANUFACTURE OF LUGGAGE, HANDBAGS SADDLERY, HARNESS AND FOOTWEAR				
	1848	106	831	37
191 Tanning and dressing of leather, manufacture of luggage handbags, saddlery & harness	999	49	217	10
192 Manufacture of footwear.	849	57	614	26
20 : MANUFACTURE OF WOOD AND OF PRODUCTS WOOD AND CORK,EXCEPT FURNITURE;MANUFACTURE OF ARTICLES OF STRAW AND PLATING MATERIALS	15299	119	13386	104
201 Saw milling and planing of wood	12985	66	12170	65
202 Manufacture of products of wood, cork,straw and plaiting materials	2314	53	1216	39
21: MANUFACTURE OF PAPER AND PAPER PRODUCTS	2415	122	1944	104
210 Manufacture of paper and paper product	2415	122	1944	104
22: PUBLISHING, PRINTING AND REPRODUCTION OF RECORDED MEDIA	2774	122	2086	95
221 Publishing	534	39	475	25
222 Printing and service activities related to printing	2240	93	1607	69
223 Reproduction of recorded media	-	-	4	@
23: MANUFACTURE OF COKE, REFINED PETROLEUM AND NUCLEAR FUEL	580	40	557	37
231 Manufacture of coke oven products	121	41	96	3
232 Manufacture of refined petroleum products	446	35	449	33
233 Processing of nuclear fuel	13	1	12	@
24: MANUFACTURE OF CHEMICALS AND CHEMICAL PRODUCTS	11765	539	6892	378
241 Manufacture of basic chemicals	2347	134	2142	119
242 Manufacture of other chemical products	9360	392	4692	250
243 Manufacture of man-made fibers	58	12	58	10
25 : MANUFACTURE OF RUBBER AND PLASTIC PRODUCTS	4799	195	3999	166
251 Manufacture of rubber products	1716	93	1342	77
252 Manufacture of plastic products	3083	102	2657	90
26: MANUFACTURE OF OTHER NON-METALLIC MINERAL PRODUCTS	10492	367	9158	319
261 Manufacture of glass and glass products	314	30	239	22
269 Manufacture of non-metallic mineral products n.e.c.	10178	337	8919	297
27 : MANUFACTURE OF BASIC METALS	5387	387	4599	345
271 Manufacture of Basic Iron & Steel	2833	229	2556	225
272 Manufacture of basic precious and non-ferrous metals	1266	76	1032	68
273 Casting of metals	1288	82	1011	52

LABOUR

Table 36.5 - FACTORY EMPLOYMENT BY INDUSTRY GROUPS
AT THREE DIGIT LEVEL OF NIC 1998- Contd.

Industry Code/Industry	2002		2003(P)	
	Number of Working Factories	Average Daily Employment ('000)	Number of Working Factories	Average Daily Employment ('000)
1	4	5	4	5
MACHINERY AND EQUIPMENTS	9413	356	8269	284
281 Manufacture of structural metal products, tanks, reservoirs and steam generators	2426	109	1794	66
289 Manufacture of other fabricated metal products;metal working service activities	6987	247	6475	218
29: MANUFACTURE OF MACHINERY AND EQUIPMENT N.E.C.	5943	422	4583	287
291 Manufacture of general purpose machinery	2157	135	1876	116
292 Manufacture of special purpose machinery	3175	257	2259	151
293 Manufacture of domestic appliances, n.e.c	611	29	448	21
30: MANUFACTURE OF OFFICE, ACCOUNTING AND COMPUTING MACHINERY	177	18	124	17
300 Manufacture of office, accounting and computing machinery	177	18	124	17
31: MANUFACTURE OF ELECTRICAL MACHINERY AND APPARATUS N.E.C.	2826	206	2193	166
311 Manufacture of electric motors, generators and transformers	694	59	528	43
312 Manufacture of electricity distribution and control apparatus	488	34	374	26
313 Manufacture of insulated wire and cable	360	19	328	18
314 Manufacture of accumulators, primary cells and primary batteries	206	15	172	20
315 Manufacture of electric lamps and lighting equipment	328	29	230	18
319 Manufacture of other electrical equipment n.e.c	750	50	561	41
32: MANUFACTURE OF RADIO, TELEVISION AND COMMUNICATION EQUIPMENT AND APPARATUS	1071	124	873	77
321 Manufacture of electronic valves and tubes and other electronic components	712	91	600	49
322 Manufacture of television and radio transmitters and apparatus for line telephony and line telegraphy	199	17	135	12
323 Manufacture of television and radio receivers, sound or video recording or reproducing apparatus, and associated goods	160	15	138	16
33 : MANUFACTURE OF MEDICAL, PRECISION AND OPTICAL INSTRUMENTS, WATCHES AND CLOCKS	637	70	506	40
331 Manufacture of medical appliances and instruments and appliances for measuring, checking, testing, navigating and other purposes except optical instruments	469	53	293	24
332 Manufacture of optical instruments and photographic equipment	-	-	107	7
333 Manufacture of watches and clocks	168	17	106	9
34 : MANUFACTURE OF MOTOR VEHICLES, TRAILERS AND SEMI-TRAILERS	1812	172	1319	130
341 Manufacture of motor vehicles	324	79	182	65
342 Manufacture of bodies (coach work) for motor vehicles; manufacture of trailers and semi-trailers	238	15	174	8
343 Manufacture of parts and accessories for motor vehicles and their engines	1250	78	963	57
35 : MANUFACTURE OF OTHER TRANSPORT EQUIPMENT	1449	215	1175	171
351 Building and repair of ships & boats	95	35	79	34
352 Manufacture of railway and tramway locomotives and rolling stock	104	72	69	42
353 Manufacture of aircraft and spacecraft	16	7	14	24
359 Manufacture of transport equipment n.e.c.	1234	101	1013	71
36 : MANUFACTURE OF FURNITURE; MANUFACTURING N.E.C.	1744	74	1592	72
361 Manufacture of furniture	592	14	521	14
369 Manufacturing n.e.c.	1152	59	1071	58

LABOUR

Table 36.5 - FACTORY EMPLOYMENT BY INDUSTRY GROUPS
AT THREE DIGIT LEVEL OF NIC 1998- Contd.

Industry Code/Industry	2002		2003(P)	
	Number of Working Factories	Average Daily Employment ('000)	Number of Working Factories	Average Daily Employment ('000)
1	4	5	4	5
37 : RECYCLING	43	3	44	1
371 Recycling of metal waste and scrap	11	2	9	@
372 Recycling of non-metal waste and scrap	32	1	35	1
40 : ELECTRICITY, GAS, STEAM AND HOT WATER SUPPLY	900	95	880	86
401 Production, collection and distribution of electricity	776	90	775	83
402 Manufacture of gas; distribution of gaseous fuels through mains	122	4	104	4
403 Steam and hot water supply	2	1	1	@
41: COLLECTION, PURIFICATION AND DISTRIBUTION OF WATER	608	10	599	11
410 Collection, Purification and distribution of water	608	10	599	11
45 : CONSTRUCTION	25	1	21	1
451 Site preparation	7	@	7	@
452 Building of complete constructions or parts thereof; civil engineering	15	1	11	@
453 Building installation	1	@	1	@
454 Building completion	2	@	1	@
455 Renting of construction or demolition equipment with operator	-	-	-	-
50 : SALE , MAINTENANCE AND REPAIR OF MOTOR VEHICLES AND MOTORCYCLES; RETAIL SALE OF AUTOMOTIVE FUEL	3886	204	3118	162
501 Sale of motor vehicles	4	@	4	@
502 Maintenance and repair of motor vehicles [including washing and polishing etc.]	2750	178	2133	142
503 Sale of motor vehicle parts and accessories	36	1	10	@
504 Sale, maintenance and repair of motorcycles and related parts and accessories	325	15	230	11
505 Retail sale of automotive fuel	771	9	741	9
51: WHOLESALE TRADE AND COMMISSION TRADE, EXCEPT OF MOTOR VEHICLES AND MOTORCYCLES	142	5	135	10
511 Wholesale on a fee or contract basis	5	@	5	@
512 Wholesale of agricultural raw material, live animals, food beverages and tobacco	1	@	3	@
513 Wholesale of household goods	2	@	2	@
514 Wholesale of non-agricultural intermediate products, waste and scrap	120	@	114	9
515 Wholesale of machinery, equipment and supplies	12	@	11	@
519 Other wholesale	2	@	-	@
52 : RETAIL TRADE, EXCEPT OF MOTOR VEHICLES AND MOTORCYCLES; REPAIR OF PERSONAL AND HOUSEHOLD GOODS	262	19	227	18
521 Non-specialized retail trade in stores	11	@	10	@
522 Retail sale of food, beverages and tobacco in specialized stores	4	@	4	@
523 Other retail trade of new goods in specialized stores	11	@	8	@
524 Retail sale of second-hand goods in stores	-	@	-	@
525 Retail trade not in stores	1	@	1	@
526 Repair of personal and household goods	235	18	204	18
55 : HOTELS AND RESTAURANTS	4	@	12	@
551 Hotels; camping sites and other provision of short-stay accommodation	4	@	12	@
552 Restaurants, bars and canteens	-	-	-	-
60 : LAND TRANSPORT; TRANSPORT VIA PIPELINES	37	3	23	2
601 Transport via railways	2	@	2	@
602 Other land transport	24	2	1	@
603 Transport via pipelines	11	@	20	2

LABOUR

Table 36.5 - FACTORY EMPLOYMENT BY INDUSTRY GROUPS
AT THREE DIGIT LEVEL OF NIC 1998- Contd.

Industry Code/Industry	2002		2003(P)	
	Number of Working Factories	Average Daily Employment ('000)	Number of Working Factories	Average Daily Employment ('000)
	4	5	4	5
61: WATER TRANSPORT	-	-	-	-
611 Sea and coastal water transport	-	-	-	-
612 Inland water transport	-	-	-	-
62 : AIR TRANSPORT	-	-	-	-
621 Scheduled air transport	-	-	-	-
622 Non-scheduled air transport	-	-	-	-
63 : SUPPORTING AND AUXILLIARY TRANSPORT ACTIVITIES; ACTIVITIES OF TRAVEL AGENCIES	574	34	572	34
630 Supporting and auxiliary transport activities; activities of travel agencies	574	34	572	34
64 : POST AND TELECOMMUNICATIONS	6	@	3	@
641 Post and courier activities	-	-	-	-
642 Telecommunications	6	@	3	@
65: FINANCIAL INTERMEDEIATION, EXCEPT INSURANCE AND PENSION FUNDING	-	-	-	-
651 Monetary Intermediation	-	-	-	-
659 Other financial intermediation	-	-	-	-
66:INSURANCE AND PENSION FUNDING,EXCEPT COMPULSORY SOCIAL SECURITY	-	-	-	-
660 Insurance and pension funding, except compulsory social security.	-	-	-	-
67 : ACTIVITIES AUXILIARY TO FINANCIAL INTERMEDIATION	-	-	-	-
671 Activities auxiliary to financial intermediation, except insurance and pension funding	-	-	-	-
672 Activities auxiliary to insurance and pension funding	-	-	-	-
70 : REAL ESTATE ACTIVITIES	-	-	-	-
701 Real estate activities with own or leased property.	-	-	-	-
702 Real estate activities on a fee or contract basis.	-	-	-	-
71 : RENTING OF MACHINERY AND EQUIPMENT WITHOUT OPERATOR AND OF PERSONAL AND HOUSEHOLD GOODS	5	@	1	@
711 Renting of transport equipment	4	@	-	-
712 Renting of other machinery and equipment	1	@	1	@
713 Renting of personal and household goods n.e.c.	-	-	-	-
72 : COMPUTER AND RELATED ACTIVITIES	16	2	14	2
721 Hardware consultancy	10	2	6	2
722 Software consultancy and supply .	4	@	5	@
723 Data processing.	-	-	1	-
724 Database activities	-	-	-	-
725 Maintenance and repair of office, accounting and computing machinery	1	@	1	@
729 Other computer related activities	1	@	1	@
73 : RESEARCH AND DEVELOPMENT	30	5	29	4
731 Research and experimental development on	30	5	29	4
732 Research & Exprimental Development	-	-	-	-
74: OTHER BUSINESS ACTIVITIES	37	2	23	5
741 Legal, accounting, book-keeping and auditing activities; tax consultancy; market	-	-	-	-
742 Architectural, engineering and other technical activities.	2	@	3	4
743 Advertising	-	-	-	-
749 Business activities N.E.C.	35	2	20	1

LABOUR

Table 36.5 - FACTORY EMPLOYMENT BY INDUSTRY GROUPS
AT THREE DIGIT LEVEL OF NIC 1998- Concl'd.

Industry Code/Industry	2002		2003(P)	
	Number of Working Factories	Average Daily Employment ('000)	Number of Working Factories	Average Daily Employment ('000)
1	4	5	4	5
75 :PUBLIC ADMINISTRATION AND DEFENCE COMPULSORY SOCIAL SECURITY	12	3	10	3
751 Administration of the State and the economic and	12	3	10	3
752 Provision of services to the community as a whole	-	-	-	-
753 Compulsory social security activities.	-	-	-	-
80 : EDUCATION	5	@	5	@
801 Primary education	-	-	5	-
802 Secondary education	5	@	-	@
803 Higher education	-	-	-	-
809 Adult and other education	-	-	-	-
85 : HEALTH AND SOCIAL WORK	1	@	1	@
851 Human health activities	-	-	-	-
852 Veterinary activities	1	@	1	@
853 Social work activities	-	-	-	-
90 : SEWAGE AND REFUSE DISPOSAL,SANITATION AND SIMILAR ACTIVITIES	68	2	47	2
900 Sewage and refuse disposal, sanitation and similar activities	68	2	47	2
91 : ACTIVITIES OF MEMBERSHIP ORGANISATIONS N.E.C.	-	-	-	-
911 Activities of business, employers and professional organisations	-	-	-	-
912 Activities of trade unions	-	-	-	-
919 Activities of other membership organisations	-	-	-	-
92 : RECREATIONAL, CULTURAL AND SPORTING ACTIVITIES	40	2	28	1
921 Motion picture, radio, television and other entertainment activities	40	2	26	1
922 News agency activities	-	-	1	@
923 Library, archives, museums and other cultural activities	-	-	1	@
924 Sporting and other recreational activities	1	@	-	-
93 : OTHER SERVICE ACTIVITIES	91	3	83	3
930 : OTHER SERVICE ACTIVITIES	91	3	83	3
95: PRIVATE HOUSEHOLDS WITH EMPLOYED PERSONS	-	-	-	-
950 Private households with employed persons.	-	-	83	3
99 : EXTRA TERRITORIAL ORGANIZATIONS AND BODIES	-	-	-	-
Total	141085	6330	111895	4927

Source: Labour Bureau Chandigarh, Ministry of Labour and Employment

(@) Less than 500.

N.E.C. : Not Elsewhere classified.

Note : (1) Data is based on the returns received by the Labour Bureau.

(2) Totals may not tally due to rounding off of figures.

(3) For data on Factory Employment by Industry Groups according to NIC-1987 classification, the Statistical Abstract, India 2004 and earlier issues may be referred to.

LABOUR

**Table 36.6- ESTIMATED AVERAGE FACTORY EMPLOYMENT IN WORKING FACTORIES : 2003
(BY STATES-AT 2 DIGIT LEVEL OF N.I.C. - 1998)**

Industry Code/ Industry	Andhra Pradesh		Assam		Goa	
	Number of working factories	Average Daily Employ- ment	Number of working factories	Average Daily Employ- ment	Number of working factories	Average Daily Employ- ment
1	2	3	4	5	6	7
01 AGRICULTURE, HUNTING AND RELATED SERVICE ACTIVITIES	748	25073	7	121	-	-
02 FORESTRY, LOGGING AND RELATED SERVICE ACTIVITIES	-	-	-	-	-	-
05 FISHING, OPERATION OF FISHING HATCHERIES AND FISH FARMS, SERVICE ACTIVITIES INCIDENTAL TO FISHING	-	-	-	-	-	-
10 MINING OF COAL AND LIGNITE; EXTRACTION OF PEAT	-	-	-	-	-	-
11 EXTRACTION OF CRUDE PETROLEUM AND NATURAL GAS; SERVICE ACTIVITIES INCIDENTAL TO OIL AND GAS EXTRACTION, EXCLUDING SURVEYING	-	-	-	-	-	-
13 MINING OF METAL ORE	-	-	-	-	-	-
14 OTHER MINING AND QUARRYING	486	5346	-	-	-	-
15 MANUFACTURE OF FOOD PRODUCTS AND BEVERAGES	12917	217295	804	57487	84	5175
16 MANUFACTURE OF TOBACCO PRODUCTS	302	21775	7	263	-	-
17 MANUFACTURE OF TEXTILES	404	52181	20	3730	27	914
18 MANUFACTURE OF WEARING APPAREL; DRESSING AND DYEING OF FUR	54	2561	-	-	4	112
19 TANNING AND DRESSING OF LEATHER; MANUFACTURE OF LUGGAGE, HANDBAGS, SADDLERY, HARNESS AND FOOTWEAR	90	2048	-	-	4	118
20 MANUFACTURE OF WOOD AND OF PRODUCTS OF WOOD AND CORK, EXCEPT FURNITURE; MANUFACTURE OF ARTICLES OF STRAW AND PLAINTING MATERIALS	3277	17217	267	6269	4	87
21 MANUFACTURE OF PAPER AND PAPER PRODUCTS	393	19012	6	2608	33	647
22 PUBLISHING, PRINTING AND REPRODUCTION OF RECORDED MEDIA	236	12864	15	789	16	825
23 MANUFACTURE OF COKE, REFINED PETROLEUM PRODUCTS AND NUCLEAR FUEL	101	5078	12	3923	4	391
24 MANUFACTURE OF CHEMICALS AND CHEMICAL PRODUCTS	1084	54882	40	3505	121	11341
25 MANUFACTURE OF RUBBER AND PLASTICS PRODUCTS	708	21557	8	648	58	3200
26 MANUFACTURE OF OTHER NON-METALLIC MINERAL PRODUCTS	3163	51626	108	4922	31	1286
27 MANUFACTURE OF BASIC METALS	606	38722	42	1332	72	5327
28 MANUFACTURE OF FABRICATED METAL PRODUCTS, EXCEPT MACHINERY AND EQUIPMENT	1206	31643	54	808	36	1036
29 MANUFACTURE OF MACHINERY AND EQUIPMENT N.E.C.*	635	23970	24	830	33	1966
30 MANUFACTURE OF OFFICE, ACCOUNTING AND COMPUTING MACHINERY	7	7512	-	-	10	960
31 MANUFACTURE OF ELECTRICAL MACHINERY AND APPARATUS N.E.C.	263	12615	7	156	30	1582
32 MANUFACTURE OF RADIO, TELEVISION AND COMMUNICATION EQUIPMENT AND APPARATUS	115	5741	2	67	28	1351
33 MANUFACTURE OF MEDICAL, PRECISION AND OPTICAL INSTRUMENTS, WATCHES AND CLOCKS	38	1224	1	23	27	1860
34 MANUFACTURE OF MOTOR VEHICLES, TRAILERS AND SEMI-TRAILERS	164	4692	1	17	9	997
35 MANUFACTURE OF OTHER TRANSPORT EQUIPMENT N.E.C.	33	20716	7	3838	11	2875
36 MANUFACTURE OF FURNITURE; MANUFACTURING N.E.C.	95	6386	3	19	14	1027
37 RECYCLING	24	634	-	-	-	-

LABOUR

Table 36.6- ESTIMATED AVERAGE FACTORY EMPLOYMENT IN WORKING FACTORIES : 2003-Contd.
(BY STATES-AT 2 DIGIT LEVEL OF N.I.C. - 1998)

Industry Code/ Industry	Andhra Pradesh		Assam		Goa	
	Number of working factories	Average Daily Employ- ment	Number of working factories	Average Daily Employ- ment	Number of working factories	Average Daily Employ- ment
1	2	3	4	5	6	7
40 ELECTRICITY, GAS, STEAM AND HOT WATER SUPPLY	118	13206	23	1357	1	93
41 COLLECTION, PURIFICATION AND DISTRIBUTION OF WATER	32	1326	3	26	4	188
45 CONSTRUCTION	4	297	-	-	-	-
50 SALE, MAINTENANCE AND REPAIR OF MOTOR VEHICLES AND MOTORCYCLES; RETAIL SALE OF AUTOMOTIVE FUEL	437	26593	30	1111	22	1025
51 WHOLESALE TRADE AND COMMISSION TRADE, EXCEPT OF MOTOR VEHICLES AND MOTORCYCLES	3	70	-	-	9	352
52 RETAIL TRADE, EXCEPT OF MOTOR VEHICLES AND MOTORCYCLES; REPAIR OF PERSONAL AND HOUSEHOLD GOODS	8	301	12	81	-	-
55 HOTELS AND RESTAURANTS	-	-	-	-	-	-
60 LAND TRANSPORT; TRANSPORT VIA PIPELINES	17	1621	3	53	-	-
61 WATER TRANSPORT	-	-	-	-	-	-
62 AIR TRANSPORT	-	-	-	-	-	-
63 SUPPORTING AND AUXILIARY TRANSPORT ACTIVITIES; ACTIVITIES OF TRAVEL AGENCIES	125	6498	18	358	2	194
64 POST AND TELECOMMUNICATIONS	-	-	1	24	-	-
65 FINANCIAL INTERMEDIATION, EXCEPT INSURANCE AND PENSION FUNDING	-	-	-	-	-	-
66 INSURANCE AND PENSION FUNDING, EXCEPT COMPULSORY SOCIAL SECURITY	-	-	-	-	-	-
67 ACTIVITIES AUXILIARY TO FINANCIAL INTERMEDIATION	-	-	-	-	-	-
70 REAL ESTATE ACTIVITIES	-	-	-	-	-	-
71 RENTING OF MACHINERY AND EQUIPMENT WITHOUT OPERATOR AND OF PERSONAL AND HOUSEHOLD GOODS	-	-	-	-	-	-
72 COMPUTER AND RELATED ACTIVITIES	3	102	-	-	-	-
73 RESEARCH AND DEVELOPMENT	4	906	-	-	-	-
74 OTHER BUSINESS ACTIVITIES	2	40	1	8	-	-
75 PUBLIC ADMINISTRATION AND DEFENCE COMPULSORY SOCIAL SECURITY	4	2843	-	-	-	-
80 EDUCATION	-	-	-	-	-	-
85 HEALTH AND SOCIAL WORK	-	-	-	-	-	-
90 SEWAGE AND REFUSE DISPOSAL, SANITATION AND SIMILAR ACTIVITIES	2	139	-	-	-	-
91 ACTIVITIES OF MEMBERSHIP ORGANIZATIONS N.E.C	-	-	-	-	-	-
92 RECREATIONAL, CULTURAL AND SPORTING ACTIVITIES	9	575	-	-	-	-
93 OTHER SERVICE ACTIVITIES	10	292	-	-	3	45
95 PRIVATE HOUSEHOLDS WITH EMPLOYED PERSONS	-	-	-	-	-	-
99EXTRA-TERRITORIAL ORGANISATIONS AND BODIES	-	-	-	-	-	-
TOTAL	27927	717179	1526	94373	696	44974

LABOUR

Table 36.6- ESTIMATED AVERAGE FACTORY EMPLOYMENT IN WORKING FACTORIES : 2003-Contd.
(BY STATES-AT 2 DIGIT LEVEL OF N.I.C. - 1998)

Industry Code/ Industry	Haryana		Karnataka		Madhya Pradesh	
	Number of working factories	Average Daily Employ- ment	Number of working factories	Average Daily Employ- ment	Number of working factories	Average Daily Employ- ment
1	8	9	10	11	12	13
01 AGRICULTURE, HUNTING AND RELATED SERVICE ACTIVITIES	174	1774	-	-	512	22299
02 FORESTRY, LOGGING AND RELATED SERVICE ACTIVITIES	-	-	-	-	-	-
05 FISHING, OPERATION OF FISH HATCHERIES AND FISH FARMS, SERVICE ACTIVITIES INCIDENTAL TO FISHING	-	-	-	-	-	-
10 MINING OF COAL AND LIGNITE; EXTRACTION OF PEAT	-	-	-	-	-	-
11 EXTRACTION OF CRUDE PETROLEUM AND NATURAL GAS; SERVICE ACTIVITIES INCIDENTAL TO OIL AND GAS EXTRACTION, EXCLUDING SURVEYING	-	-	-	-	-	-
12. MINING OF URANIUM AND THORIUM ORES	-	-	-	-	-	-
13 MINING OF METAL ORES	-	-	-	-	-	-
14 OTHER MINING AND QUARRYING	-	-	-	-	-	-
15 MANUFACTURE OF FOOD PRODUCTS AND BEVERAGES	738	32407	2014	151947	2311	47588
16 MANUFACTURE OF TOBACCO PRODUCTS	14	490	56	7510	18	1072
17 MANUFACTURE OF TEXTILES	878	35889	316	66888	296	84677
18 MANUFACTURE OF WEARING APPAREL; DRESSING AND DYEING OF FUR	236	7630	835	154792	16	1609
19 TANNING AND DRESSING OF LEATHER; MANUFACTURE OF LUGGAGE, HANDBAGS, SADDLERY, HARNESS AND FOOTWEAR	144	10269	52	4916	96	2413
20 MANUFACTURE OF WOOD AND OF PRODUCTS OF WOOD AND CORK, EXCEPT FURNITURE; MANUFACTURE OF ARTICLES OF STRAW AND PLAITING MATERIALS	416	12604	190	9459	1655	13699
21 MANUFACTURE OF PAPER AND PAPER PRODUCTS	144	8245	226	23341	107	9882
22 PUBLISHING, PRINTING AND REPRODUCTION OF RECORDED MEDIA	54	5110	330	21197	67	4604
23 MANUFACTURE OF COKE, REFINED PETROLEUM PRODUCTS AND NUCLEAR FUEL	25	922	101	9712	33	1940
24 MANUFACTURE OF CHEMICALS AND CHEMICAL PRODUCTS	418	14960	567	45259	440	31467
25 MANUFACTURE OF RUBBER AND PLASTICS PRODUCTS	341	18870	412	25231	200	13281
26 MANUFACTURE OF OTHER NON-METALLIC MINERAL PRODUCTS	591	37568	546	42902	623	35237
27 MANUFACTURE OF BASIC METALS	589	59179	323	46573	311	21857
28 MANUFACTURE OF FABRICATED METAL PRODUCTS, EXCEPT MACHINERY AND EQUIPMENT	1001	44573	1132	67519	327	15642
29 MANUFACTURE OF MACHINERY AND EQUIPMENT N.E.C.*	186	27344	508	75095	137	18004
30 MANUFACTURE OF OFFICE, ACCOUNTING AND COMPUTING MACHINERY	5	739	9	1477	5	650
31 MANUFACTURE OF ELECTRICAL MACHINERY AND APPARATUS N.E.C.	94	19043	374	41736	185	26002
32 MANUFACTURE OF RADIO, TELEVISION AND COMMUNICATION EQUIPMENT AND APPARATUS	36	2437	292	31299	33	7311
33 MANUFACTURE OF MEDICAL, PRECISION AND OPTICAL INSTRUMENTS, WATCHES AND CLOCKS	20	1294	122	22006	18	1555
34 MANUFACTURE OF MOTOR VEHICLES, TRAILERS AND SEMI-TRAILERS	77	7376	122	27279	72	18462
35 MANUFACTURE OF OTHER TRANSPORT EQUIPMENT	52	9914	30	27141	15	2721
36 MANUFACTURE OF FURNITURE; MANUFACTURING N.E.C	7	343	94	5457	48	3899
37 RECYCLING	2	150	-	-	-	-

LABOUR

Table 36.6- ESTIMATED AVERAGE FACTORY EMPLOYMENT IN WORKING FACTORIES : 2003-Contd.
(BY STATES-AT 2 DIGIT LEVEL OF N.I.C. - 1998)

Industry Code/ Industry	Haryana		Karnataka		Madhya Pradesh	
	Number of working factories	Average Daily Employ- ment	Number of working factories	Average Daily Employ- ment	Number of working factories	Average Daily Employ- ment
1	8	9	10	11	12	13
40 ELECTRICITY, GAS, STEAM AND HOT WATER SUPPLY	5	236	75	8132	64	14165
41 COLLECTION, PURIFICATION AND DISTRIBUTION OF WATER	-	-	16	640	26	1586
45 CONSTRUCTION	1	9	3	100	1	22
50 SALE, MAINTENANCE AND REPAIR OF MOTOR VEHICLES AND MOTORCYCLES; RETAIL SALE OF AUTOMOTIVE FUEL	26	698	523	55895	128	9757
51 WHOLESALE TRADE AND COMMISSION TRADE, EXCEPT OF MOTOR VEHICLES AND MOTORCYCLES	3	66	-	-	26	713
52 RETAIL TRADE, EXCEPT OF MOTOR VEHICLES AND MOTORCYCLES; REPAIR OF PERSONAL AND HOUSEHOLD GOODS	3	137	-	-	13	527
55 HOTELS AND RESTAURANTS	8	191	-	-	-	-
60 LAND TRANSPORT; TRANSPORT VIA PIPELINES	-	-	2	36	-	-
61 WATER TRANSPORT	-	-	-	-	-	-
62 AIR TRANSPORT	-	-	-	-	-	-
63 SUPPORTING AND AUXILIARY TRANSPORT ACTIVITIES; ACTIVITIES OF TRAVEL AGENCIES	9	232	17	447	107	3991
64 POST AND TELECOMMUNICATIONS	-	-	-	-	-	-
65 FINANCIAL INTERMEDIATION, EXCEPT INSURANCE AND PENSION FUNDING.	-	-	-	-	-	-
66 INSURANCE AND PENSION FUNDING, EXCEPT COMPULSORY SOCIAL SECURITY	-	-	-	-	-	-
67 ACTIVITIES AUXILIARY TO FINANCIAL INTERMEDIATION	-	-	-	-	-	-
70 REAL ESTATE ACTIVITIES.	-	-	-	-	-	-
71 RENTING OF MACHINERY AND EQUIPMENT WITHOUT OPERATOR AND OF PERSONAL AND HOUSEHOLD GOODS	-	-	-	-	-	-
72 COMPUTER AND RELATED ACTIVITIES	-	-	2	99	-	-
73 RESEARCH AND DEVELOPMENT	6	494	3	1559	-	-
74 OTHER BUSINESS ACTIVITIES	-	-	8	5042	1	42
75 PUBLIC ADMINISTRATION AND DEFENCE COMPULSORY SOCIAL SECURITY	-	-	-	-	-	-
80 EDUCATION	-	-	-	-	-	-
85 HEALTH AND SOCIAL WORK	-	-	-	-	-	-
90 SEWAGE AND REFUSE DISPOSAL, SANITATION AND SIMILAR ACTIVITIES	-	-	6	452	-	-
91 ACTIVITIES OF MEMBERSHIP ORGANIZATIONS N.E.C	-	-	-	-	-	-
92 RECREATIONAL, CULTURAL AND SPORTING ACTIVITIES	-	-	-	-	-	-
93 OTHER SERVICE ACTIVITIES	-	-	30	1764	2	35
95 PRIVATE HOUSEHOLDS WITH EMPLOYED PERSONS EXTRA-TERRITORIAL ORGANISATIONS AND BODIES.	-	-	-	-	-	-
99. EXTRA-TERRITORIAL ORGANISATIONS AND BODIES	-	-	-	-	-	-
TOTAL	6303	361193	9750	1003496	7893	416709

LABOUR

Table 36.6- ESTIMATED AVERAGE FACTORY EMPLOYMENT IN WORKING FACTORIES : 2003-Contd.
(BY STATES-AT 2 DIGIT LEVEL OF N.I.C. - 1998)

Industry Code/ Industry	Maharashtra		Orissa		Punjab	
	Number of working factories	Average Daily Employ- ment	Number of working factories	Average Daily Employ- ment	Number of working factories	Average Daily Employ- ment
1	14	15	16	17	18	19
01 AGRICULTURE, HUNTING AND RELATED SERVICE ACTIVITIES	550	25285	-	-	337	12714
02 FORESTRY, LOGGING AND RELATED SERVICE ACTIVITIES	1	5	-	-	-	-
05 FISHING, OPERATION OF FISH HATCHERIES AND FISH FARMS; SERVICE ACTIVITIES INCIDENTAL TO FISHING	-	-	-	-	-	-
10 MINING OF COAL AND LIGNITE; EXTRACTION OF PEAT	-	-	-	-	-	-
11 EXTRACTION OF CRUDE PETROLEUM AND NATURAL GAS; SERVICE ACTIVITIES INCIDENTAL TO OIL AND GAS EXTRACTION, EXCLUDING SURVEYING	-	-	-	-	-	-
12 MINING OF URANIUM AND THORIUM ORES	-	-	-	-	-	-
13 MINING OF METAL ORES	-	-	-	-	-	-
14 OTHER MINING AND QUARRYING	27	624	-	-	55	422
15 MANUFACTURE OF FOOD PRODUCTS AND BEVERAGES	3003	155417	467	12772	2327	70656
16 MANUFACTURE OF TOBACCO PRODUCTS	44	4236	9	192	4	166
17 MANUFACTURE OF TEXTILES	3981	153370	61	8417	2027	88295
18 MANUFACTURE OF WEARING APPAREL; DRESSING AND DYEING OF FUR	744	21114	3	87	68	2808
19 TANNING AND DRESSING OF LEATHER; MANUFACTURE OF LUGGAGE, HANDBAGS, SADDLERY, HARNESS AND FOOTWEAR	132	2273	3	52	223	7533
20 MANUFACTURE OF WOOD AND OF PRODUCTS OF WOOD AND CORK, EXCEPT FURNITURE; MANUFACTURE OF ARTICLES OF STRAW AND PLAITING MATERIALS	3352	16637	133	1287	2083	11656
21 MANUFACTURE OF PAPER AND PAPER PRODUCTS	631	19689	34	5717	191	9450
22 PUBLISHING, PRINTING AND REPRODUCTION OF RECORDED MEDIA	904	35869	27	2621	142	3036
23 MANUFACTURE OF COKE, REFINED PETROLEUM PRODUCTS AND NUCLEAR FUEL	155	11172	26	717	7	166
24 MANUFACTURE OF CHEMICALS AND CHEMICAL PRODUCTS	3010	158301	155	10043	274	16194
25 MANUFACTURE OF RUBBER AND PLASTICS PRODUCTS	1509	47896	50	4121	238	16606
26 MANUFACTURE OF OTHER NON-METALLIC MINERAL PRODUCTS	869	29666	398	15253	671	17882
27 MANUFACTURE OF BASIC METALS	1032	62567	150	41307	911	39631
28 MANUFACTURE OF FABRICATED METAL PRODUCTS, EXCEPT MACHINERY AND EQUIPMENT	2712	78738	139	6252	1140	26143
29 MANUFACTURE OF MACHINERY AND EQUIPMENT N.E.C.*	1467	95888	35	1388	1296	29251
30 MANUFACTURE OF OFFICE, ACCOUNTING AND COMPUTING MACHINERY	57	4189	-	-	6	226
31 MANUFACTURE OF ELECTRICAL MACHINERY AND APPARATUS N.E.C.	804	42873	56	1044	126	7182
32 MANUFACTURE OF RADIO, TELEVISION AND COMMUNICATION EQUIPMENT AND APPARATUS	272	19378	4	175	55	5765
33 MANUFACTURE OF MEDICAL, PRECISION AND OPTICAL INSTRUMENTS, WATCHES AND CLOCKS	188	7388	2	133	20	762
34 MANUFACTURE OF MOTOR VEHICLES, TRAILERS AND SEMI-TRAILERS	389	49079	1	25	410	18842
35 MANUFACTURE OF OTHER TRANSPORT EQUIPMENT	177	45845	5	4173	797	48267
36 MANUFACTURE OF FURNITURE; MANUFACTURING N.E.C	863	37219	34	794	74	3882
37 RECYCLING	-	-	-	-	-	-

LABOUR

Table 36.6- ESTIMATED AVERAGE FACTORY EMPLOYMENT IN WORKING FACTORIES : 2003-Contd.
(BY STATES-AT 2 DIGIT LEVEL OF N.I.C. - 1998)

Industry Code/ Industry	Maharashtra		Orissa		Punjab	
	Number of working factories	Average Daily Employ- ment	Number of working factories	Average Daily Employ- ment	Number of working factories	Average Daily Employ- ment
1	14	15	16	17	18	19
40 ELECTRICITY, GAS, STEAM AND HOT WATER SUPPLY	89	16029	19	10283	217	12230
41 COLLECTION, PURIFICATION AND DISTRIBUTION OF WATER	120	3261	6	204	3	55
45 CONSTRUCTION	12	385	-	-	-	-
50 SALE, MAINTENANCE AND REPAIR OF MOTOR VEHICLES AND MOTORCYCLES; RETAIL SALE OF AUTOMOTIVE FUEL	1344	48247	56	2097	226	6291
51 WHOLESALE TRADE AND COMMISSION TRADE, EXCEPT OF MOTOR VEHICLES AND MOTORCYCLES	56	7202	26	996	12	119
52 RETAIL TRADE, EXCEPT OF MOTOR VEHICLES AND MOTORCYCLES; REPAIR OF PERSONAL AND HOUSEHOLD GOODS	98	3484	2	45	40	2473
55 HOTELS AND RESTAURANTS	-	-	-	-	-	-
60 LAND TRANSPORT; TRANSPORT VIA PIPELINES	2	29	-	-	1	14
61 WATER TRANSPORT	-	-	-	-	-	-
62 AIR TRANSPORT	-	-	-	-	-	-
63 SUPPORTING AND AUXILIARY TRANSPORT ACTIVITIES; ACTIVITIES OF TRAVEL AGENCIES	122	17828	27	248	114	2599
64 POST AND TELECOMMUNICATIONS	2	240	-	-	-	-
65 FINANCIAL INTERMEDIATION, EXCEPT INSURANCE AND PENSION FUNDING	-	-	-	-	-	-
66 INSURANCE AND PENSION FUNDING, EXCEPT COMPULSORY SOCIAL SECURITY	-	-	-	-	-	-
67 ACTIVITIES AUXILIARY TO FINANCIAL INTERMEDIATION	-	-	-	-	-	-
70 REAL ESTATE ACTIVITIES	-	-	-	-	-	-
71 RENTING OF MACHINERY AND EQUIPMENT WITHOUT OPERATOR AND OF PERSONAL AND HOUSEHOLD GOODS	1	10	-	-	-	-
72 COMPUTER AND RELATED ACTIVITIES	7	1640	-	-	-	-
73 RESEARCH AND DEVELOPMENT	14	700	1	477	-	-
74 OTHER BUSINESS ACTIVITIES	6	133	1	6	4	98
75 PUBLIC ADMINISTRATION AND DEFENCE COMPULSORY SOCIAL SECURITY	6	85	-	-	-	-
80 EDUCATION	2	14	1	20	2	112
85 HEALTH AND SOCIAL WORK	1	120	-	-	-	-
90 SEWAGE AND REFUSE DISPOSAL, SANITATION AND SIMILAR ACTIVITIES	37	704	-	-	1	2
91 ACTIVITIES OF MEMBERSHIP ORGANIZATIONS N.E.C	-	-	-	-	-	-
92 RECREATIONAL, CULTURAL AND SPORTING ACTIVITIES	17	468	2	38	-	-
93 OTHER SERVICE ACTIVITIES	30	854	-	-	8	138
95 PRIVATE HOUSEHOLDS WITH EMPLOYED PERSONS	-	-	-	-	-	-
99. EXTRA-TERRITORIAL ORGANISATIONS AND BODIES	-	-	-	-	-	-
TOTAL	28892	1216153	1933	130984	14109	461674

LABOUR

Table 36.6- ESTIMATED AVERAGE FACTORY EMPLOYMENT IN WORKING FACTORIES : 2003-Contd.
(BY STATES-AT 2 DIGIT LEVEL OF N.I.C. - 1998)

Industry Code/ Industry	Rajasthan		Tamil Nadu		Tripura	
	Number of working factories	Average Daily Employ- ment	Number of working factories	Average Daily Employ- ment	Number of working factories	Average Daily Employ- ment
1	20	21	22	23	24	25
01 AGRICULTURE, HUNTING AND RELATED SERVICE ACTIVITIES	330	7454	1	12
02 FORESTRY, LOGGING AND RELATED SERVICE ACTIVITIES	-	-	-	-	-	-
05 FISHING, OPERATION OF FISH HATCHERIES AND FISH FARMS; SERVICE ACTIVITIES INCIDENTAL TO FISHING	-	-	-	-	-	-
10 MINING OF COAL AND LIGNITE; EXTRACTION OF FISHING	-	-	-	-	-	-
11 EXTRACTION OF CRUDE PETROLEUM AND NATURAL GAS; SERVICE ACTIVITIES INCIDENTAL TO OIL AND GAS EXTRACTION, EXCLUDING SURVEYING	-	-	1	10
12 MINING OF URANIUM AND THORIUM ORES	-	-	-	-	-	-
13 MINING OF METAL ORES	-	-	-	-
14 OTHER MINING AND QUARRYING	-	-	-	-
15 MANUFACTURE OF FOOD PRODUCTS AND BEVERAGES	949	19182	208	3179
16 MANUFACTURE OF TOBACCO PRODUCTS	15	467	6	340
17 MANUFACTURE OF TEXTILES	1463	122454	10	2148
18 MANUFACTURE OF WEARING APPAREL; DRESSING AND DYEING OF FUR	129	8379	3	30
19 TANNING AND DRESSING OF LEATHER; MANUFACTURE OF LUGGAGE, HANDBAGS, SADDLERY, HARNESS AND FOOTWEAR	58	3595	1	17
20 MANUFACTURE OF WOOD AND OF PRODUCTS OF WOOD AND CORK, EXCEPT FURNITURE; MANUFACTURE OF ARTICLES OF STRAW AND PLAITING MATERIALS	1801	12300	65	409
21 MANUFACTURE OF PAPER AND PAPER PRODUCTS	101	2551	3	35
22 PUBLISHING, PRINTING AND REPRODUCTION OF RECORDED MEDIA	73	2836	157	1244
23 MANUFACTURE OF COKE, REFINED PETROLEUM PRODUCTS AND NUCLEAR FUEL	80	2347	2	72
24 MANUFACTURE OF CHEMICALS AND CHEMICAL PRODUCTS	502	21768	23	345
25 MANUFACTURE OF RUBBER AND PLASTICS PRODUCTS	220	7977	32	343
26 MANUFACTURE OF OTHER NON-METALLIC MINERAL PRODUCTS	1870	61890	246	17654
27 MANUFACTURE OF BASIC METALS	469	24077	15	201
28 MANUFACTURE OF FABRICATED METAL PRODUCTS, EXCEPT MACHINERY AND EQUIPMENT	169	6030	134	920
29 MANUFACTURE OF MACHINERY AND EQUIPMENT N.E.C.*	186	11159	4	20
30 MANUFACTURE OF OFFICE, ACCOUNTING AND COMPUTING MACHINERY	5	162	-	-
31 MANUFACTURE OF ELECTRICAL MACHINERY AND APPARATUS N.E.C.	144	9207	9	74
32 MANUFACTURE OF RADIO, TELEVISION AND COMMUNICATION EQUIPMENT AND APPARATUS	26	2682	1	3
33 MANUFACTURE OF MEDICAL, PRECISION AND OPTICAL INSTRUMENTS, WATCHES AND CLOCKS	27	2398	3	23
34 MANUFACTURE OF MOTOR VEHICLES, TRAILERS AND SEMI-TRAILERS	44	2285	1	14
35 MANUFACTURE OF OTHER TRANSPORT EQUIPMENT	20	3075	2	14
36 MANUFACTURE OF FURNITURE; MANUFACTURING N.E.C	247	10890	82	642
37 RECYCLING	-	-	-	-

LABOUR

Table36.6- ESTIMATED AVERAGE FACTORY EMPLOYMENT IN WORKING FACTORIES : 2003-Contd.
(BY STATES-AT 2 DIGIT LEVEL OF N.I.C. - 1998)

Industry Code/ Industry	Rajasthan		Tamil Nadu*		Tripura	
	Number of working factories	Average Daily Employ- ment	Number of working factories	Average Daily Employ- ment	Number of working factories	Average Daily Employ- ment
1	20	21	22	23	24	25
40 ELECTRICITY, GAS, STEAM AND HOT WATER SUPPLY	246	8663	18	1042
41 COLLECTION, PURIFICATION AND DISTRIBUTION OF WATER	25	715	363	2222
45 CONSTRUCTION	-	-	-	-
50 SALE, MAINTENANCE AND REPAIR OF MOTOR VEHICLES AND MOTORCYCLES; RETAIL SALE OF AUTOMOTIVE FUEL	145	6860	126	1279
51 WHOLESALE TRADE AND COMMISSION TRADE, EXCEPT OF MOTOR VEHICLES AND MOTORCYCLES	-	-	-	-
52 RETAIL TRADE, EXCEPT OF MOTOR VEHICLES AND MOTORCYCLES; REPAIR OF PERSONAL AND HOUSEHOLD GOODS	39	11117	3	48
55 HOTELS AND RESTAURANTS	-	-	-	-	-	-
60 LAND TRANSPORT; TRANSPORT VIA PIPELINES	-	-	-	-
61 WATER TRANSPORT	-	-	-	-	-	-
62 AIR TRANSPORT	-	-	-	-	-	-
63 SUPPORTING AND AUXILIARY TRANSPORT ACTIVITIES; ACTIVITIES OF TRAVEL AGENCIES	22	758	4	85
64 POST AND TELECOMMUNICATIONS	-	-	-	-
65 FINANCIAL INTERMEDIATION, EXCEPT INSURANCE AND PENSION FUNDING	-	-	-	-	-	-
66 INSURANCE AND PENSION FUNDING, EXCEPT COMPULSORY SOCIAL SECURITY	-	-	-	-	-	-
67 ACTIVITIES AUXILIARY TO FINANCIAL INTERMEDIATION	-	-	-	-	-	-
70 REAL ESTATE ACTIVITIES	-	-	-	-	-	-
71 RENTING OF MACHINERY AND EQUIPMENT WITHOUT OPERATOR AND OF PERSONAL AND HOUSEHOLD GOODS	-	-	-	-
72 COMPUTER AND RELATED ACTIVITIES	-	-	-	-
73 RESEARCH AND DEVELOPMENT	-	-	-	-
74 OTHER BUSINESS ACTIVITIES	-	-	-	-
75 PUBLIC ADMINISTRATION AND DEFENCE	-	-	-	-
80 EDUCATION	-	-	-	-	-	-
85 HEALTH AND SOCIAL WORK	-	-	-	-	-	-
90 SEWAGE AND REFUSE DISPOSAL, SANITATION AND SIMILAR ACTIVITIES	-	-	-	-
91 ACTIVITIES OF MEMBERSHIP ORGANIZATIONS N.E.C	-	-	-	-	-	-
92 RECREATIONAL, CULTURAL AND SPORTING ACTIVITIES	-	-	-	-
93 OTHER SERVICE ACTIVITIES	-	-	-	-
95 PRIVATE HOUSEHOLDS WITH EMPLOYED PERSONS	-	-	-	-	-	-
99 EXTRA-TERRITORIAL ORGANISATIONS AND BODIES	-	-	-	-	-	-
TOTAL	9406	373278	24811	1251783	1522	32425

LABOUR

Table 36.6- ESTIMATED AVERAGE FACTORY EMPLOYMENT IN WORKING FACTORIES : 2003-Contd.
(BY STATES-AT 2 DIGIT LEVEL OF N.I.C. - 1998)

Industry Code/ Industry	A & N Island		Chandigarh	
	Number of working factories	Average Daily Employ- ment	Number of working factories	Average Daily Employ- ment
1	26	27	28	29
01 AGRICULTURE, HUNTING AND RELATED SERVICE ACTIVITIES	-	-	1	37
02 FORESTRY, LOGGING AND RELATED SERVICE ACTIVITIES	-	-	-	-
05 FISHING, OPERATION OF FISH HATCHERIES AND FISH FARMS; SERVICE ACTIVITIES INCIDENTAL TO FISHING	1	20	-	-
10 MINING OF COAL AND LIGNITE; EXTRACTION OF FISHING	-	-	-	-
11 EXTRACTION OF CRUDE PETROLEUM AND NATURAL GAS; SERVICE ACTIVITIES INCIDENTAL TO OIL AND GAS EXTRACTION, EXCLUDING SURVEYING	-	-	3	129
12 MINING OF URANIUM AND THORIUM ORES	-	-	-	-
13 MINING OF METAL ORES	-	-	-	-
14 OTHER MINING AND QUARRYING	1	28	1	4
15 MANUFACTURE OF FOOD PRODUCTS AND BEVERAGES	2	113	37	1018
16 MANUFACTURE OF TOBACCO PRODUCTS	-	-	-	-
17 MANUFACTURE OF TEXTILES	-	-	7	215
18 MANUFACTURE OF WEARING APPAREL; DRESSING AND DYEING OF FUR	-	-	-	-
19 TANNING AND DRESSING OF LEATHER; MANUFACTURE OF LUGGAGE, HANDBAGS, SADDLERY, HARNESS AND FOOTWEAR	-	-	-	-
20 MANUFACTURE OF WOOD AND OF PRODUCTS OF WOOD AND CORK, EXCEPT FURNITURE; MANUFACTURE OF ARTICLES OF STRAW AND PLAITING MATERIALS	4	1340	81	423
21 MANUFACTURE OF PAPER AND PAPER PRODUCTS	-	-	9	141
22 PUBLISHING, PRINTING AND REPRODUCTION OF RECORDED MEDIA	2	141	23	1922
23 MANUFACTURE OF COKE, REFINED PETROLEUM PRODUCTS AND NUCLEAR FUEL	-	-	-	-
24 MANUFACTURE OF CHEMICALS AND CHEMICAL PRODUCTS	-	-	18	316
25 MANUFACTURE OF RUBBER AND PLASTICS PRODUCTS	-	-	9	162
26 MANUFACTURE OF OTHER NON-METALLIC MINERAL PRODUCTS	-	-	8	116
27 MANUFACTURE OF BASIC METALS	-	-	27	1139
28 MANUFACTURE OF FABRICATED METAL PRODUCTS, EXCEPT MACHINERY AND EQUIPMENT	1	21	91	1615
29 MANUFACTURE OF MACHINERY AND EQUIPMENT N.E.C.*	-	-	51	1689
30 MANUFACTURE OF OFFICE, ACCOUNTING AND COMPUTING MACHINERY	-	-	-	-
31 MANUFACTURE OF ELECTRICAL MACHINERY AND APPARATUS N.E.C.	-	-	48	2742
32 MANUFACTURE OF RADIO, TELEVISION AND COMMUNICATION EQUIPMENT AND APPARATUS	-	-	-	-
33 MANUFACTURE OF MEDICAL, PRECISION AND OPTICAL INSTRUMENTS, WATCHES AND CLOCKS	-	-	10	286
34 MANUFACTURE OF MOTOR VEHICLES, TRAILERS AND SEMI-TRAILERS	-	-	12	251
35 MANUFACTURE OF OTHER TRANSPORT EQUIPMENT	4	1316	13	771
36 MANUFACTURE OF FURNITURE; MANUFACTURING N.E.C	-	-	4	84
37 RECYCLING	-	-	-	-

LABOUR

Table 36.6- ESTIMATED AVERAGE FACTORY EMPLOYMENT IN WORKING FACTORIES : 2003-Contd.
(BY STATES-AT 2 DIGIT LEVEL OF N.I.C. - 1998)

Industry Code/ Industry	A & N Island		Chandigarh	
	Number of working factories	Average Daily Employ- ment	Number of working factories	Average Daily Employ- ment
1	26	27	28	29
40 ELECTRICITY, GAS, STEAM AND HOT WATER SUPPLY	4	847	-	-
41 COLLECTION, PURIFICATION AND DISTRIBUTION OF WATER	2	300	-	-
45 CONSTRUCTION	-	-	-	-
50 SALE, MAINTENANCE AND REPAIR OF MOTOR VEHICLES AND MOTORCYCLES; RETAIL SALE OF AUTOMOTIVE FUEL	7	729	31	1430
51 WHOLESALE TRADE AND COMMISSION TRADE, EXCEPT OF MOTOR VEHICLES AND MOTORCYCLES	-	-	-	-
52 RETAIL TRADE, EXCEPT OF MOTOR VEHICLES AND MOTORCYCLES; REPAIR OF PERSONAL AND HOUSEHOLD GOODS	-	-	-	-
55 HOTELS AND RESTAURANTS	-	-	-	-
60 LAND TRANSPORT; TRANSPORT VIA PIPELINES	-	-	-	-
61 WATER TRANSPORT	-	-	-	-
62 AIR TRANSPORT	-	-	-	-
63 SUPPORTING AND AUXILIARY TRANSPORT ACTIVITIES; ACTIVITIES OF TRAVEL AGENCIES	5	372	-	-
64 POST AND TELECOMMUNICATIONS	-	-	-	-
65 FINANCIAL INTERMEDIATION, EXCEPT INSURANCE AND PENSION FUNDING	-	-	-	-
66 INSURANCE AND PENSION FUNDING, EXCEPT COMPULSORY SOCIAL SECURITY	-	-	-	-
67 ACTIVITIES AUXILIARY TO FINANCIAL INTERMEDIATION	-	-	-	-
70 REAL ESTATE ACTIVITIES	-	-	-	-
71 RENTING OF MACHINERY AND EQUIPMENT WITHOUT OPERATOR AND OF PERSONAL AND HOUSEHOLD GOODS	-	-	-	-
72 COMPUTER AND RELATED ACTIVITIES	-	-	-	-
73 RESEARCH AND DEVELOPMENT	-	-	-	-
74 OTHER BUSINESS ACTIVITIES	-	-	-	-
75 PUBLIC ADMINISTRATION AND DEFENCE	-	-	-	-
80 EDUCATION	-	-	-	-
85 HEALTH AND SOCIAL WORK	-	-	-	-
90 SEWAGE AND REFUSE DISPOSAL, SANITATION AND SIMILAR ACTIVITIES	-	-	-	-
91 ACTIVITIES OF MEMBERSHIP ORGANIZATIONS N.E.C	-	-	-	-
92 RECREATIONAL, CULTURAL AND SPORTING ACTIVITIES	-	-	-	-
93 OTHER SERVICE ACTIVITIES	-	-	-	-
95 PRIVATE HOUSEHOLDS WITH EMPLOYED PERSONS	-	-	-	-
99 EXTRA-TERRITORIAL ORGANISATIONS AND BODIES	-	-	-	-
TOTAL	33	5227	484	14490

LABOUR

Table 36.6- ESTIMATED AVERAGE FACTORY EMPLOYMENT IN WORKING FACTORIES : 2003-Contd.
(BY STATES-AT 2 DIGIT LEVEL OF N.I.C. - 1998)

Industry Code/ Industry	Pondicherry		Total	
	Number of working factories	Average Daily Employ- ment	Number of working factories	Average Daily Employ- ment
1	30	31	32	33
01 AGRICULTURE, HUNTING AND RELATED SERVICE ACTIVITIES	-	-	2660	94769
02 FORESTRY, LOGGING AND RELATED SERVICE ACTIVITIES	-	-	1	5
05 FISHING, OPERATION OF FISH HATCHERIES AND FISH FARMS; SERVICE ACTIVITIES INCIDENTAL TO FISHING	-	-	1	20
10 MINING OF COAL AND LIGNITE; EXTRACTION OF FISHING	-	-	-	-
11 EXTRACTION OF CRUDE PETROLEUM AND NATURAL GAS; SERVICE ACTIVITIES INCIDENTAL TO OIL AND GAS EXTRACTION, EXCLUDING SURVEYING	-	-	4	139
12 MINING OF URANIUM AND THORIUM ORES	-	-	-	-
13 MINING OF METAL ORES	-	-	-	-
14 OTHER MINING AND QUARRYING	-	-	986	27054
15 MANUFACTURE OF FOOD PRODUCTS AND BEVERAGES	263	4788	26176	779024
16 MANUFACTURE OF TOBACCO PRODUCTS	-	-	475	36511
17 MANUFACTURE OF TEXTILES	46	8049	9536	617227
18 MANUFACTURE OF WEARING APPAREL; DRESSING AND DYEING OF FUR	3	555	2095	199677
19 TANNING AND DRESSING OF LEATHER; MANUFACTURE OF LUGGAGE, HANDBAGS, SADDLERY, HARNESS AND FOOTWEAR	28	3340	831	36574
20 MANUFACTURE OF WOOD AND OF PRODUCTS OF WOOD AND CORK, EXCEPT FURNITURE; MANUFACTURE OF ARTICLES OF STRAW AND PLAITING MATERIALS	58	516	13386	103903
21 MANUFACTURE OF PAPER AND PAPER PRODUCTS	66	2573	1944	103891
22 PUBLISHING, PRINTING AND REPRODUCTION OF RECORDED MEDIA	40	1506	2086	94564
23 MANUFACTURE OF COKE, REFINED PETROLEUM PRODUCTS AND NUCLEAR FUEL	11	160	557	36600
24 MANUFACTURE OF CHEMICALS AND CHEMICAL PRODUCTS	240	9670	6892	378051
25 MANUFACTURE OF RUBBER AND PLASTICS PRODUCTS	214	6131	3999	166023
26 MANUFACTURE OF OTHER NON-METALLIC MINERAL PRODUCTS	34	3202	9158	319204
27 MANUFACTURE OF BASIC METALS	52	3005	4599	344917
28 MANUFACTURE OF FABRICATED METAL PRODUCTS, EXCEPT MACHINERY AND EQUIPMENT	128	3291	8269	284231
29 MANUFACTURE OF MACHINERY AND EQUIPMENT N.E.C.*	21	551	4583	287155
30 MANUFACTURE OF OFFICE, ACCOUNTING AND COMPUTING MACHINERY	20	1066	124	16981
31 MANUFACTURE OF ELECTRICAL MACHINERY AND APPARATUS N.E.C.	53	1548	2193	165804
32 MANUFACTURE OF RADIO, TELEVISION AND COMMUNICATION EQUIPMENT AND APPARATUS	10	742	873	76951
33 MANUFACTURE OF MEDICAL, PRECISION AND OPTICAL INSTRUMENTS, WATCHES AND CLOCKS	30	1104	506	40056
34 MANUFACTURE OF MOTOR VEHICLES, TRAILERS AND SEMI-TRAILERS	15	865	1319	130184
35 MANUFACTURE OF OTHER TRANSPORT EQUIPMENT	9	326	1175	170992
36 MANUFACTURE OF FURNITURE; MANUFACTURING N.E.C	27	1082	1592	71732
37 RECYCLING	18	259	44	1043

LABOUR

Table 36.6- ESTIMATED AVERAGE FACTORY EMPLOYMENT IN WORKING+A32 FACTORIES : 2003-Concl.d.
(BY STATES-AT 2 DIGIT LEVEL OF N.I.C. - 1998)

Industry Code/ Industry	Pondicherry		Total	
	Number of working factories	Average Daily Employ- ment	Number of working factories	Average Daily Employ- ment
1	30	31	32	33
40 ELECTRICITY, GAS, STEAM AND HOT WATER SUPPLY	1	97	880	86380
41 COLLECTION, PURIFICATION AND DISTRIBUTION OF WATER	-	-	599	10523
45 CONSTRUCTION	-	-	21	813
50 SALE, MAINTENANCE AND REPAIR OF MOTOR VEHICLES AND MOTORCYCLES; RETAIL SALE OF AUTOMOTIVE FUEL	17	452	3118	162464
51 WHOLESALE TRADE AND COMMISSION TRADE, EXCEPT OF MOTOR VEHICLES AND MOTORCYCLES	-	-	135	9518
52 RETAIL TRADE, EXCEPT OF MOTOR VEHICLES AND MOTORCYCLES; REPAIR OF PERSONAL AND HOUSEHOLD GOODS	9	115	227	18328
55 HOTELS AND RESTAURANTS	4	257	12	448
60 LAND TRANSPORT; TRANSPORT VIA PIPELINES	-	-	23	1717
61 WATER TRANSPORT	-	-	-	-
62 AIR TRANSPORT	-	-	-	-
63 SUPPORTING AND AUXILIARY TRANSPORT ACTIVITIES; ACTIVITIES OF TRAVEL AGENCIES	-	-	572	33610
64 POST AND TELECOMMUNICATIONS	-	-	3	264
65 FINANCIAL INTERMEDIATION, EXCEPT INSURANCE AND PENSION FUNDING	-	-	-	-
66 INSURANCE AND PENSION FUNDING, EXCEPT COMPULSORY SOCIAL SECURITY	-	-	-	-
67 ACTIVITIES AUXILIARY TO FINANCIAL INTERMEDIATION	-	-	-	-
70 REAL ESTATE ACTIVITIES	-	-	-	-
71 RENTING OF MACHINERY AND EQUIPMENT WITHOUT OPERATOR AND OF PERSONAL AND HOUSEHOLD GOODS	-	-	1	10
72 COMPUTER AND RELATED ACTIVITIES	2	40	14	1881
73 RESEARCH AND DEVELOPMENT	-	-	29	4136
74 OTHER BUSINESS ACTIVITIES	-	-	23	5369
75 PUBLIC ADMINISTRATION AND DEFENCE	-	-	-	-
80 EDUCATION	-	-	10	2928
85 HEALTH AND SOCIAL WORK	-	-	5	146
90 SEWAGE AND REFUSE DISPOSAL, SANITATION AND SIMILAR ACTIVITIES	-	-	1	122
91 ACTIVITIES OF MEMBERSHIP ORGANIZATIONS N.E.C	-	-	-	-
92 RECREATIONAL, CULTURAL AND SPORTING ACTIVITIES	-	-	28	1081
93 OTHER SERVICE ACTIVITIES	-	-	83	3128
95 PRIVATE HOUSEHOLDS WITH EMPLOYED PERSONS	-	-	-	-
99 EXTRA-TERRITORIAL ORGANISATIONS AND BODIES	-	-	-	-
TOTAL	1421	55290	111895	4927445

Source : Labour Bureau Chandigarh, Ministry of Labour and Employment.

N.E.C. = Not Elsewhere Classified.

Note : i) Data is based on the Returns received.

ii) The data in respect of the Industry code not featuring above is NIL.

iii) * Data pertain to 2002.

LABOUR

Table 36.7- EMPLOYMENT IN FACTORIES- ADULTS, ADOLESCENTS AND CHILDREN ACCORDING TO SEX (BY STATES)

Year/State/U.T.	No. of working factories submitting returns	Average daily number of workers						Total (col 3 to 8)
		Adults		Adolescents		Children		
		Men	Women	Males	Females	Boys	Girls	
1	2	3	4	5	6	7	8	9
1991	110727	4697664	507097	1839	6169	331	1158	5214258
1994	120251	4858546	629892	919	4863	-	-	5494220
1995	109171	4138954	513765	1978	5817	43	-	4660557
1996	110659	4149798	528809	1476	3345	6	-	4683434
1997	117243	4197602	676868	1406	6651	-	-	4882527
1998	127408	4345279	818287	882	5156	-	-	5169604
1999	122948	4319394	682219	1663	5529	-	-	5008805
2000	45117	1984008	210461	38	..	-	-	2194507
2001	60749	2790114	474420	1860	5673	-	-	3272067
2002	57022	2782091	542608	923	4745	-	-	3330367
2003(P)	35729	1903297	235590	239	409	-	-	2139535
2003(P)								
State:								
Andhra Pradesh	9311	315166	52839	-	..	-	-	368005
Assam	370	34309	1725	198	409	-	-	36641
Bihar
Goa	501	27628	6543	-	..	-	-	34171
Gujarat
Haryana	911	94425	4717	-	-	-	-	99142
Himachal Pradesh
Jammu & Kashmir
Karnataka	4456	243287	93168	-	-	-	-	336455
Kerala
Madhya Pradesh	922	117013	5399	-	..	-	-	122412
Maharashtra	13567	718419	49119	41	-	-	-	767579
Manipur
Meghalaya
Orissa	939	92905	4861	-	-	-	-	97766
Punjab	1441	109636	4106	-	-	-	-	113742
Rajasthan	2266	112168	3179	-	-	-	-	115347
Tamil Nadu
Tripura	128	2395	474	-	-	-	-	2869
Uttar Pradesh
West Bengal
Union Territory:								
A. & N. Islands	24	3988	213	-	-	-	-	4201
Chandigarh	294	9252	538	-	-	-	-	9790
D. & Nagar Haveli
Delhi
Pondicherry	599	22706	8709	-	-	-	-	31415

Source: Labour Bureau Chandigarh, Ministry of Labour and Employment

Notes: i) Data relates to the States/Union Territories from where returns have been received.

ii) The information contained in this table may not tally with other tables as this table does not contain the information relating to the factories which are not submitting returns.

LABOUR

Table 36.8- ESTIMATED AVERAGE DAILY EMPLOYMENT AND WORKING FACTORIES

Year/State/ Union Territory	Section 2m(i)	
	Number of working factories	Estimated average daily employment (‘000)
1	2	3
1991	112837	7258
1994	120982	7173
1995	115758	6357
1996	124871	6428
1997	116728	6301
1998	127989	6924
1999	139132	7654
2000	73419	3789
2001	112140	5656
2002	115825	4553
2003(P)	80070	4659
2003(P)		
State:		
Andhra Pradesh	16069	629
Assam	1433	91
Bihar
Goa	695	45
Gujarat
Haryana	6190	359
Himachal Pradesh
Jammu & Kashmir
Karnataka	9679	997
Kerala
Madhya Pradesh	4359	387
Maharashtra	20769	1172
Manipur
Meghalaya
Orissa	1671	128
Punjab	11183	433
Rajasthan	6825	338
Tamil Nadu
Tripura	317	14
Uttar Pradesh
West Bengal
Union Territory:		
A. & N. Islands	33	5
Chandigarh	403	14
Dadra & Nagar Haveli
Delhi
Pondicherry	444	47

Source: Labour Bureau Chandigarh, Ministry of Labour and Employment

Note : Data relates to States/Union Territories from where returns have been received.

LABOUR

Table 36.9 - EMPLOYMENT IN MINES

Year/State/ Union Territory	Coal	Copper	Chromite	Diamond	Gold	Gypsum	Iron ore
1	2	3	4	5	6	7	8
1991	554134	12844	10569	362	9332	607	40050
1996	506403	9921	9781	393	6875	352	37290
1997	503416	10273	9133	338	6836	587	38637
1998	491289	8706	9012	400	6128	531	37290
1999	475752	7704	8018	388	5885	500	36183
2000	458387	6880	6909	362	5338	499	35293
2001	438179	3999	6506	256	3618	530	32305
2002	422594	3343	6920	206	3342	413	33657
2003	416767	2524	6649	227	2747	365	35823
2004	405212	2060	7543	210	2727	388	38607
2005	398890	1933	6953	195	3113	352	37477
2005							
State:							
Andhra Pradesh	58711	-	-	-	-	-	67
Arunachal Pradesh	-	-	-	-	-	-	-
Assam	2811	-	-	-	-	-	-
Bihar	-	-	-	-	-	-	-
Chhattisgarh	36140	-	-	-	-	-	6249
Goa	-	-	-	-	-	-	4405
Gujarat	1806	-	-	-	-	13	-
Haryana	-	-	-	-	-	-	-
Himachal Pradesh	-	-	-	-	-	-	-
Jammu & Kashmir	973	-	-	-	-	72	-
Jharkhand	118829	478	-	-	61	-	4441
Karnataka	-	-	454	-	3022	-	6251
Kerala	-	-	-	-	-	-	-
Madhya Pradesh	45207	479	-	195	-	-	72
Maharashtra	28870	-	-	-	-	-	660
Manipur	-	-	-	-	-	-	-
Meghalaya	-	-	-	-	-	-	-
Mizoram	-	-	-	-	-	-	-
Nagaland	-	-	-	-	-	-	-
Orissa	17416	-	6499	-	-	-	15332
Punjab	-	-	-	-	-	-	-
Rajasthan	347	976	-	-	-	267	-
Tamil Nadu	12093	-	-	-	-	-	-
Tripura	-	-	-	-	-	-	-
Uttar Khand	-	-	-	-	30	-	-
Uttar Pradesh	6211	-	-	-	-	-	-
West Bengal	69476	-	-	-	-	-	-
Union Territory:							
A. & N. Islands	-	-	-	-	-	-	-
Chandigarh	-	-	-	-	-	-	-
D. & N. Haveli	-	-	-	-	-	-	-
Daman & Diu	-	-	-	-	-	-	-
Delhi	-	-	-	-	-	-	-
Lakshadweep	-	-	-	-	-	-	-
Pondicherry	-	-	-	-	-	-	-

LABOUR

Table 36.9 - EMPLOYMENT IN MINES - Concl'd.

Year/State/ Union Territory	Lime stone	Magnesite	Manganese	Mica	Stone(1)	Other Minerals	Total
1	9	10	11	12	13	14	15
1991	43522	6581	17866	2173	11243	80597	789880
1996	35741	3547	18129	1194	5160	79267	716183
1997	32962	3457	16074	1186	4899	76739	704537
1998	31242	3063	15824	1112	5251	75755	685673
1999	29762	2723	16468	975	5162	69381	658901
2000	31128	3113	16136	983	6407	67306	638741
2001	24276	2862	13637	609	6290	66234	599301
2002	25191	2252	13729	624	7801	61808	581880
2003	24265	2109	13266	612	7979	58994	572327
2004	24778	1731	14569	631	7941	61514	567911
2005	25828	1820	14656	613	7045	60220	559095
2005							
State:							
Andhra Pradesh	2259	-	943	460	85	5188	67713
Arunachal Pradesh	-	-	-	-	-	72	72
Assam	373	-	-	-	-	8367	11551
Bihar	522	-	-	73	21	25	641
Chattisgarh	1539	-	-	-	-	2293	46221
Goa	-	-	309	-	205	114	5033
Gujarat	1427	-	-	-	222	10017	13485
Haryana	16	-	-	-	2242	2210	4468
Himachal Pradesh	1185	-	-	-	-	15	1200
Jammu & Kashmir	54	-	-	-	-	-	1099
Jharkhand	1378	57	65	72	2517	2904	130802
Karnataka	1111	234	1346	-	30	1763	14211
Kerala	254	-	-	-	-	1597	1851
Madhya Pradesh	2421	-	3915	-	-	1688	53977
Maharashtra	497	-	3545	-	449	786	34807
Manipur	-	-	-	-	-	-	-
Meghalaya	259	-	-	-	-	-	259
Mizoram	-	-	-	-	-	-	-
Nagaland	-	-	-	-	-	-	-
Orissa	2870	-	4533	-	-	2490	49140
Punjab	-	-	-	-	-	-	-
Rajasthan	7941	-	-	8	71	12094	21704
Tamil Nadu	1569	1325	-	-	301	5601	20889
Tripura	-	-	-	-	-	321	321
Uttar Khand	95	204	-	-	-	1402	1731
Uttar Pradesh	-	-	-	-	-	315	6526
West Bengal	-	-	-	-	902	958	71336
Union Territory:							
A. & N. Islands	58	-	-	-	-	-	58
Chandigarh	-	-	-	-	-	-	-
D. & N. Haveli	-	-	-	-	-	-	-
Daman & Diu	-	-	-	-	-	-	-
Delhi	-	-	-	-	-	-	-
Lakshadweep	-	-	-	-	-	-	-
Pondicherry	-	-	-	-	-	-	-

Source: Directorate General of Mines Safety, Ministry of Labour and Employment

(1) From 1995 onwards figures of Stone exclude Granite.

LABOUR

Table 36.10 - EMPLOYMENT IN PLANTATIONS

Year	Tea		Coffee (1)		Rubber(2)		Total	
	No. of Estates	Average daily no. of workers	No. of Estates	Average daily no. of workers	No. of Estates	Average daily no. of workers	No. of Estates	Average daily no. of workers
1	2	3	4	5	6	7	8	9
1991	13873	996735	136033	367004	815881	293108	965787	1656847
1994	35116	1028694	..	455600	881743	315900	916859	1800194
1995	37319	1028787	..	458230	911615	322300	948934	1809317
1996	38705	1029651	..	487460	931960	328900	970665	1846011
1997	38707	1032267	..	486730	958046	335450	996753	1854447
1998	88115	1045401	..	491700	971299	341320	1059414	2923822
1999	98867	1188815	..	526470	986810	345200	1085677	2060485
2000	112010	1210055	156811	535156	991876	347700	1260697	2092911
2001	116659	1232150	156811	551777	1004489	348700	1277959	2168627
2002	127801	1255100	173807	496845	1007528	354300	1309136	2106245
2003	129027	1256210	173808	527540	1016825	372770	1319660	2156520
2004	129027	1257610	173808	527431	1029275	380320	1332110	2165361
2005(P)	129027	1258800(E)	1049655	388050	1178682	1646850
2006(P)	1070000	397040

Sources: 1. Tea Board
2. Coffee Board.
3. Rubber Board.

(E) Estimated and subject to revision.

(S) Since 1998 figures are inclusive of small growers operating in different tea producing districts/states.

(1) Figures relate to 31st March of the year stated.

(2) Figures relate to 31st March of the next year .

LABOUR

Table 36.11-EMPLOYMENT IN SHOPS AND COMMERCIAL ESTABLISHMENTS

('000 number)

Year/State/ Union Territory	Shops		Commercial esta- blishments		Restaurants, theatres etc.		All establish- ments	
	No.	Workers	No.	Workers	No.	Workers	No.	Workers
1	2	3	4	5	6	7	8	9
1991	3108	2314	611	2204	181	622	3900	5140
1996	3978	2671	970	2490	209	655	5157	5816
1997	4460	2850	801	2563	211	705	5473	6118
1998	4546	2619	794	2639	201	676	5541	5934
1999	4727	3009	852	2765	222	730	5801	6503
2000	4782	3137	837	2958	217	784	5836	6878
2001	4866	3013	901	3045	255	871	6023	6928
2002	4724	3157	908	3283	262	923	5895	7364
2003	4508	3032	859	3136	246	828	5613	6995
2004	3697	2867	662	2338	201	689	4561	5894
2004								
State:								
Andhra Pradesh	354	336	31	131	17	72	401	539
Assam	56	49	8	22	4	13	67	84
Bihar	152	152	71	641	7	109	231	902
Chhattisgarh	\$	\$	\$	\$	\$	\$	\$	\$
Goa	31	29	6	21	4	22	41	72
Gujarat	779	672	247	522	24	88	1050	1282
Haryana	161	93	11	39	4	10	177	142
Himachal Pradesh	36	11	4	9	7	9	47	29
Jammu & Kashmir	145	20	8	18	12	10	165	48
Jharkhand	\$	\$	\$	\$	\$	\$	\$	\$
Karnataka	168	197	69	327	16	81	253	605
Kerala	231	206	35	86	25	62	291	353
Madhya Pradesh	\$	\$	\$	\$	\$	\$	\$	\$
Maharashtra	\$	\$	\$	\$	\$	\$	\$	\$
Manipur	2	2	@	@	@	1	2	3
Meghalaya	2	12	@	@	@	3	3	15
Orissa	13	39	8	36	4	15	25	90
Punjab	211	91	33	92	6	17	250	200
Rajasthan	440	167	31	117	26	60	497	345
Tamil Nadu	343	256	13	87	1	9	357	352
Tripura	26	19	1	2	2	1	28	22
Uttar Pradesh	13	118	-	-	-	-	13	118
Uttarakhand	\$	\$	\$	\$	\$	\$	\$	\$
West Bengal	519	380	82	173	41	102	642	655
Union Territory:								
A. & N. Islands	-	-	-	-	-	-	-	-
Chandigarh	14	17	4	15	2	6	20	38
Delhi	\$	\$	\$	\$	\$	\$	\$	\$
Daman & Diu	#	#	#	#	#	#	#	#
Pondicherry	\$	\$	\$	\$	\$	\$	\$	\$

Source: Labour Bureau Shimla, Ministry of Labour and Employment

@ Less than 500.

The Act has not been implemented.

\$ The States/UT's have not submitted annual returns.

Note: 1. The States/UT's excluded from the above table have not furnished annual returns.

2. The employment figures are covered by the Shops and Commercial Establishments Act and weekly holidays act.

3. Totals may not tally due to rounding of figures.

LABOUR

Table 36.12-PERFORMANCE OF EMPLOYMENT EXCHANGES - STATE WISE

Year/State/ Union Terro- ritories	o of Employment Exchanges\$	Regist- rations	Vacancies notified (in, 000)	Submi- ssions	Placements	Live Register\$
1	2	3	4	5	6	7
2001	938	5552.6	304.1	1908.8	169.2	41995.9
2002	939	5064.0	220.3	1748.8	142.6	41171.2
2003	945	5462.5	256.1	1917.3	154.9	41388.7
2004	947	5373.0	274.6	1801.4	137.7	40457.6
2005	947	5437.1	349.2	2402.0	173.2	39347.8
2006	947	7289.5	358.2	3029.5	177.0	41466.0
2006						
State						
Andhra Pradesh	31	347.6	15.0	222.2	0.9	2418.6
Arunachal Pradesh	10	7.3	@	0.4	@	30.2
Assam	52	147.8	5.1	68.9	1.1	1843.2
Bihar	37	479.9	0.4	10.4	0.1	1747.1
Chattisgarh	18	167.9	2.8	10.4	2.5	1050.9
Delhi	14	77.3	1.9	21.6	0.2	556.9
Goa	1	10.2	2.2	41.3	0.6	101.8
Gujarat	42	239.4	145.0	571.0	99.0	801.5
Haryana	61	161.6	14.0	16.7	3.1	1120.4
Himachal Pradesh	15	136.5	6.9	143.9	1.8	766.0
Jammu & Kashmir	14	13.1	@	0.3	-	105.6
Jharkand	33	144.8	1.7	84.2	1.6	1254.2
Karnataka	40	104.8	4.9	32.4	2.3	1143.5
Kerala	86	521.2	16.4	172.9	10.0	3777.3
Madhya Pradesh	58	370.1	4.5	24.7	1.9	2006.1
Maharashtra	46	586.3	54.2	466.0	13.9	3652.2
Manipur	11	43.8	12.2	75.0	0.1	579.9
Meghalaya	11	6.5	1.9	2.8	@	32.1
Mizoram	3	21.0	0.2	1.8	@	44.9
Nagaland	7	9.1	@	0.4	@	42.6
Orissa	40	182.6	1.8	82.6	1.0	891.3
Punjab	46	83.6	16.3	78.2	3.3	454.3
Rajasthan	42	194.9	8.2	41.6	4.1	779.6
Sikkim*	-	-	-	-	-	-
Tamil Nadu	34	991.4	12.7	140.1	9.7	4258.8
Tripura	5	34.8	1.3	6.7	0.4	427.2
Uttarakhand	23	141.3	4.1	29.7	3.1	464.1
Uttar Pradesh	84	1535.2	3.5	106.8	1.7	3110.6
West Bengal	75	498.8	16.6	547.7	13.1	7702.3
Union Territry:						
A. & N. Islands	1	3.7	@	0.2	0.3	40.0
Chandigarh	2	3.4	2.6	5.9	0.3	52.0
D. & N. Haveli	1	-	-	-	-	6.5
Daman & Diu	2	0.4	0.1	-	@	10.9
Lakshadweep	1	-	-	-	-	11.2
Pondicherry	1	23.3	1.0	22.5	0.7	182.2
Cent. Empl. Exch.	-	-	0.1	-	-	-

Source: Directorate General of Employment & Training,
Ministry of Labour & Employment

(\$) At the end of the year. @ Figures less than 50.

(*) No employment exchanges are working in the state of Sikkim.

Notes : Totals may not tally due to rounding off.

LABOUR

Table 36.13-TOTAL EARNINGS OF FACTORY WORKERS IN INDIA (\$)
(By States and Union Territories)

(Rs.'000)

Year/State/ Union Territory	1991	2001	2002	2003	2004(P)
1	2	3	4	5	6
State:					
Andhra Pradesh	3412184	634580	#	1240195	1115448
Arunachal Pradesh	@	@	@	@	@
Assam	1146628	20388	430247	9467	77329
Bihar	3452011	#	#	#	#
Chhatisgarh	*	#	#
Goa	16883	#	#	31021	82555
Gujarat	3763509	@	@	@	@
Haryana	1667390	@	@	@	@
Himachal Pradesh	#	22306	49332	@	@
Jammu & Kashmir	#	#	#	#	#
Jharkhand	*	#	3457561
Karnataka	1032793	#	#	@	@
Kerala	1728341	#	#	@	@
Madhya Pradesh	752548	#	@	@	@
Maharashtra	3835459	76814	177075	62777	42301
Manipur	33714	4098	#	#	4167
Meghalaya	#	#	#	#	#
Mizoram	@	@	@	@	@
Nagaland	#	#	#	#	#
Orissa	230429	109130	10816	24041	14327
Punjab	1522721	@	@	@	@
Rajasthan	789105	51057	63542	73068	58845
Sikkim	#	#	#
Tamil Nadu	7184697	#	#	#	#
Tripura	8329	14169	19089	16436	33426
Uttarakhand	*	#	#
Uttar Pradesh	#	#	#	#	#
West Bengal	#	#	#	#	#
Union Territory:					
A. & N. Islands	179156	@	@	@	@
Chandigarh	@	@	@	@	@
D. & N. Haveli	#	#	#
Daman and Diu	#	#	#
Delhi	566700	@	@	@	@
Lakshadweep	#	@	@
Pondicherry	319588	270760	#	#	#
All India	31642185	1203302	750101	1457004	

Source: Labour Bureau Chandigarh, Ministry of Labour and Employment

§ The coverage of data varies from year to year as returns have not been received from all the factories coming within the purview of the Act.

@ States/UTs gone out of the purview of the Payment of Wages Act, 1936 due to revision of the wages.

Returns not received.

* The States came to existence in the year 2001.

LABOUR

Table 36.14-AVERAGE PER CAPITA ANNUAL EARNINGS OF FACTORY WORKERS (\$)
(By States and Union Territories)

(Rupees)

Year/State/ Union Territory	1991	2001	2002	2003	2004(P)
1	2	3	4	5	6
State:					
Andhra Pradesh	11543	15854	#	12765	12347
Arunachal Pradesh	@	@	@	@	@
Assam	11917	16206	14063	11688	13463
Bihar	9504	#	#	#	#
Chhatisgarh	*	#	#
Goa	11429	#	#	34051	49523
Gujarat	13555	@	@	@	@
Haryana	10987	@	@	@	@
Himachal Pradesh	#	25377	11635	@	@
Jammu & Kashmir	#	#	#	#	#
Jharkhand	*	#	18332
Karnataka	20154	#	#	@	@
Kerala	12443	#	#	@	@
Madhya Pradesh	19614	#	@	@	@
Maharashtra	13616	14326	13802	11470	11529
Manipur	10677	14328	#	#	19113
Meghalaya	#	#	#	#	#
Mizoram	@	@	@	@	@
Nagaland	#	#	#	#	#
Orissa	13458	16988	14636	15401	13180
Punjab	15402	@	@	@	@
Rajasthan	13593	15614	15834	15613	16337
Sikkim	#	#	#
Tamil Nadu	11010	#	#	#	#
Tripura	5936	10550	12709	9392	12124
Uttarakhand	*	#	#
Uttar Pradesh	#	#	#	#	#
West Bengal	#	#	#	#	#
Union Territory:					
A. & N. Islands	13134	#	@	@	@
Chandigarh	@	@	@	@	@
D. & N. Haveli	#	#	#
Daman and Diu	#	#	#
Delhi	13658	@	@	@	@
Lakshadweep	#	@	@
Pondicherry	15083	20850	#	#	#
All India	12208	16751	13912	12969	16413

Source: Labour Bureau Chandigarh, Ministry of Labour and Employment

\$ The coverage of data varies from year to year as returns have not been received from all the factories coming within the purview of the Payment of Wages Act 1936.

@ States/UTs gone out of the purview of the Payment of Wages Act, 1936 due to revision of the wages.

Returns not received.

* The States came to existence in the year 2001.

Note :Totals may not tally due to rounding off of the figures.

LABOUR

**Table 36.15 -AVERAGE PER CAPITA ANNUAL EARNINGS OF FACTORY LABOUR
IN MANUFACTURING INDUSTRIES**

(Rupees)

NIC-1998	Industry	2002	2003	2004(P)
1	2	3	4	5
15	MANUFACTURE OF FOOD PRODUCTS AND BEVERAGES	15351	11648	11732
16	MANUFACTURE OF TOBACCO PRODUCTS	14113	5330	9431
17	MANUFACTURE OF TEXTILES	10007	16720	15868
18	MANUFACTURE OF WEARING APPAREL; DRESSING AND DYEING OF FUR	8346	15913	14794
19	TANNING AND DRESSING OF LEATHER; MANUFACTURE OF LUGGAGE, HANDBAGS, SADDLERY, HARNESS AND FOOTWEAR	12195	12219	10537
20	MANUFACTURE OF WOOD AND OF PRODUCTS OF WOOD AND CORK, EXCEPT FURNITURE; MANUFACTURE OF ARTICLES OF STRAW AND PLAINTING MATERIALS	9756	14991	14227
21	MANUFACTURE OF PAPER AND PAPER PRODUCTS	15969	12386	13896
22	PUBLISHING, PRINTING AND REPRODUCTION OF RECORDED MEDIA	11968	14707	17442
23	MANUFACTURE OF COKE, REFINED PETROLEUM PRODUCTS AND NUCLEAR FUEL	9009	15508	18092
24	MANUFACTURE OF CHEMICALS AND CHEMICAL PRODUCTS	11732	15409	15752
25	MANUFACTURE OF RUBBER AND PLASTICS PRODUCTS	14657	13565	17024
26	MANUFACTURE OF OTHER NON-METALLIC MINERAL PRODUCTS	14182	10976	16912
27	MANUFACTURE OF BASIC METALS	9817	14300	19021
28	MANUFACTURE OF FABRICATED METAL PRODUCTS, EXCEPT MACHINERY AND EQUIPMENT	12357	14433	17521
29	MANUFACTURE OF MACHINERY AND EQUIPMENT N.E.C.*	27734	16600	16137
30	MANUFACTURE OF OFFICE, ACCOUNTING AND COMPUTING MACHINERY	-	13800	16558
31	MANUFACTURE OF ELECTRICAL MACHINERY AND APPARATUS N.E.C.	8355	13253	17116
32	MANUFACTURE OF RADIO, TELEVISION AND COMMUNICATION EQUIPMENT AND APPARATUS	16946	15616	23835
33	MANUFACTURE OF MEDICAL, PRECISION AND OPTICAL INSTRUMENTS, WATCHES AND CLOCKS	15094	38452	39008
34	MANUFACTURE OF MOTOR VEHICLES, TRAILERS AND SEMI-TRAILERS	13723	17611	18436
35	MANUFACTURE OF OTHER TRANSPORT EQUIPMENT	23350	13114	17988
36	MANUFACTURE OF FURNITURE; MANUFACTURING N.E.C	12864	13111	14701
37	RECYCLING	..	15975	17538
ALL INDUSTRIES		13912	12969	16413

Source: Labour Bureau Chandigarh, Ministry of Labour and Employment

Note : i) Data relates to workers earning less than Rs.1600 per month.

ii) Data excludes employees in Railway workshops.

iii) The coverage of data varies from year to year as returns have not been received from all the factories coming within the purview of the Act.

P: Provisional

LABOUR

Table 36.16-WAGES AND EARNINGS OF MINING LABOUR

(Rupees)

Average Weekly Earnings of Miners and Loaders - Coal Mines										
In December	Assam		West Bengal		Jharkhand		Madhya Pradesh		All Coalfields	
	Under-ground	Open working	Under-ground	Open working	Under-ground	Open working	Under-ground	Open working	Under-ground	Open working
1	2	3	4	5	6	7	8	9	10	11
1991	510.50	435.20	517.63	391.38	471.53	550.83	536.88	503.98	508.53	596.14
1994	973.48	402.55	814.09	657.80	825.94	1040.59	1151.89	1007.92	975.97	952.97
1995	1045.00	1005.00	994.00	983.00	1031.00	1330.00	1590.00	1141.00	1213.00	1173.00
1996	1181.00	936.00	1290.00	1595.00	1324.00	1372.00	1489.00	1191.00	1412.00	1380.00
1997	1181.00	936.00	1369.00	1280.00	1379.00	1531.00	1653.00	1219.00	1489.00	1519.00
1998	1201.00	1000.00	1576.00	1295.00	1521.00	1716.00	1892.00	1502.00	1680.00	1691.00
1999	1247.00	1150.00	1680.00	..	1600.00	1824.00	2045.00	2472.00	1801.00	1813.00
2000	1424.00	-	1690.00	-	1652.00	1810.00	2116.00	-	1897.00	1743.00
2001	1765.00	-	1950.00	-	2019.00	2409.00	2802.00	-	2362.00	2275.00
2002
2003	2312.00	-	2352.00	-	2463.00	2150.00	2770.00	-	2694.00	2280.00
2004	2320.00	-	2672.00	-	2467.00	2604.00	3179.00	-	2591.00	2811.00
2005	2372.00	-	2853.00	-	2361.00	2680.00	3623.00	3639.00	3078.00	3020.00

Average Weekly Earnings of Miners and Loaders - Non Coal Mines

1	Mica		Manganese	Limestone	China Clay*	
	Andhra Pradesh	Bihar	Jharkhand	Madhya Pradesh	Madhya Pradesh	Jharkhand
1	2	3	4	5	6	7
1991	115	195	-	277	398	162
1994	194	257	-	295	477	182
1995	214	281	-	311	447	205
1996	233	308	-	338	655	205
1997	311	293	-	317	839	248
1998	293	307	-	343	968	252
1999	300	308	-	335	865	268
2000	310	336	435	392	888	338
2001	419	349	426	1016	1044	392
2002	430	349	426	1013	954	395
2003	375	-	363	372	698	434
2004	418	-	363	400	808	436
2005(P)	408	-	384	408	820	422

Source: Directorate General of Mine Safety, Ministry of Labour

Note (1) Figures relate to underground in the case of mica mines and open cast workings in the case of others.

* As reported all Iron and Chinaclay mines which was previously in Bihar, now lying under Jharkhand

LABOUR

Table 36.17-INDUSTRIAL INJURIES IN FACTORIES

Year/State/ Union Territory	Fatal		Non-Fatal		Total	
	Number	Incidence rate(#)	Number	Incidence rate(#)	Number	Incidence rate(#)
1	2	3	4	5	6	7
1991	690	0.18	76262	20.02	76952	20.20
1994	696	0.20	74860	21.51	75556	21.71
1995	892	0.20	73069	16.50	73961	16.70
1996	907	0.20	60328	13.63	61935	13.83
1997	901	0.19	53260	11.13	54161	11.32
1998	862	0.16	57789	11.11	58651	11.27
1999	911	0.17	46478	10.07	47389	10.23
2000	486	0.22	23490	10.70	23976	10.93
2001	627	0.29	27737	12.64	28364	12.93
2002	540	0.16	19913	5.98	20453	6.14
2003(P)	525	0.11	15907	3.23	16432	3.33
2003(P)						
State:						
Andhra Pradesh	100	0.14	1876	2.62	1976	2.75
Assam	6	0.06	59	0.63	65	0.69
Bihar
Goa	3	0.07	142	3.16	145	3.22
Gujarat
Haryana	25	0.07	156	0.43	181	0.50
Himachal Pradesh
Jammu & Kashmir
Karnataka	50	0.05	1963	1.96	2013	2.01
Kerala
Madhya Pradesh	48	0	2017	4.84	2065	4.96
Maharashtra	159	0.13	6257	5.14	6416	5.27
Manipur
Meghalaya
Orissa	49	0.37	651	4.97	700	5.34
Punjab	7	0.02	397	0.86	404	0.88
Rajasthan	58	0.16	1690	4.53	1748	4.69
Tamil Nadu
Tripura	1	0.03	3	0.09	4	0.12
Uttar Pradesh
West Bengal
Union Territory:						
A. & N. Islands	-	-	53	10.14	53	10.14
Chandigarh	11	0.76	70	4.83	81	5.59
Dadra and Nagar Haveli
Daman & Diu
Delhi
Pondicherry	8	0.14	573	10.36	581	10.50

Source: Labour Bureau Chandigarh, Ministry of Labour and Employment

Rate per 1000 workers employed.
Note : Data is based on the returns only.

LABOUR

**Table 36.18-INDUSTRIAL INJURIES IN MINES
(By Minerals)**

Year/Mineral	No. of accidents		No. of Injuries		Rate per Injuries per 1000 persons employed	
	Fatal	Serious	Fatal	Serious	Fatal	Serious
1	2	3	4	5	6	7
1991	222	1094	245	1176	0.31	1.49
1995	203	1025	293	1092	0.42	1.56
1996	203	940	229	1006	0.32	1.40
1997	213	943	242	1011	0.34	1.44
1998	184	777	211	833	0.30	1.21
1999	188	825	210	901	0.32	1.37
2000	168	848	199	901	0.31	1.41
2001	176	866	222	928	0.37	1.55
2002	133	834	161	874	0.28	1.56
2003	135	731	175	775	0.31	1.35
2004	146	1150	162	1195	0.29	2.10
2005	144	1214	169	1251	0.30	2.24
2005						
Minerals:						
Apatite	-	-	-	-	-	-
Asbestos	1	-	1	1	4.83	4.83
Barites	-	-	-	-	-	-
Bauxite	-	-	-	-	-	-
Marble	3	-	3	-	1.85	-
Chromite	-	1	-	1	-	0.14
Coal	96	1106	117	1138	0.29	2.85
Copper	-	4	-	4	-	2.07
Diamond	-	1	-	1	-	-
Dolomite	-	-	-	-	-	-
Felspar	-	-	-	-	-	-
Galena	1	24	1	24	0.31	7.43
Gold	-	10	-	10	-	3.21
Granite	6	1	7	2	0.98	0.28
Iron	15	34	16	36	0.43	0.96
Lime stone	7	9	7	9	0.28	0.35
Magnesite	-	-	-	-	-	-
Manganese	-	5	-	5	-	0.34
Oil	1	15	1	15	0.05	0.78
Silica	-	-	-	-	-	-
Sillimanite	-	-	-	-	-	-
Steatite	2	-	2	-	0.49	-
Stone	8	-	9	1	1.28	0.14
China Clay	-	1	-	1	-	0.31
Fluorite	-	-	-	-	-	-
Mica	-	-	-	-	-	-
Quartz	1	-	2	-	2.39	-
Atomic mineral *	3	3	3	3

Source: Directorate General of Mines Safety, Ministry of Labour and Employment

* Employment for Atomic Mineral is not available.

LABOUR

Table 36.19 - INDUSTRIAL DISPUTES

Year/State/ Union Territory	No. of disputes	No. of workers involved	No. of mandays lost
1	2	3	4
1991	1810	1342022	26428092
1996	1166	939304	20284803
1997	1305	981267	16971389
1998	1097	1288923	22061984
1999	927	1310695	26786856
2000	771	1418299	28763121
2001	674	687778	23766809
2002	579	1079434	26585919
2003	552	1815945	30255911
2004	477	2072221	23866367
2005	456	2913601	29664999
2005			
State:			
Andhra Pradesh	23	198010	1011506
Arunachal Pradesh	-	-	-
Assam	4	19484	112226
Bihar	*	23163	23163
Chattisgarh	1	7700	10400
Goa	-	-	-
Gujarat	34	79469	187368
Haryana	17	21403	494297
Himachal Pradesh	11	6394	23447
Jammu & Kashmir	1	145	145
Jharkhand	-	-	-
Karnataka	16	146295	457965
Kerala	17	563324	3619378
Madhya Pradesh	1	84773	84823
Maharashtra	8	931291	1432693
Manipur	2	600	19200
Meghalaya	-	-	-
Mizoram	-	-	-
Nagaland	-	-	-
Orissa	7	24639	121785
Punjab	6	8544	33455
Rajasthan	20	59298	1927448
Sikkim	-	-	-
Tamil Nadu	65	33195	660954
Tripura	-	-	-
Uttar Pradesh	9	46951	132759
Uttarakhand	3	4824	38761
West Bengal	208	599482	19216222
Union Territory:			
A. & N. Islands	-	-	-
Chandigarh	3	44204	46591
D. and N. Haveli	-	-	-
Delhi	*	10413	10413
Daman & Diu	-	-	-
Lakshadweep	-	-	-
Pondicherry	-	-	-

Source: Labour Bureau Shilma, Ministry of Labour and Employment

(*) The number of disputes have been shown as 'NIL' as the same relates to all-india strikes and not counted in the States/Union Territory.

During the year 2005, three All-India Strikes took place which have been accounted for in the States/Union Territory in which the mandays lost were maximum but the number of workers involved and mandays lost have been included in the concerned States/Union Territories.

Note: i) The figures relate to disputes resulting in work-stoppages involving 10 or more workers.

ii) Information in respect of other States/Union Territories is Nil.

LABOUR

Table 36.20 - INDUSTRIAL DISPUTES BY CAUSES

Year	Wages and allowances	Bonus	Personnel	Retrenchment	Leave & hours of work/ shift working	Indiscipline & violence	Others	Not known	Total no. of disputes
1	2	3	4	5	6	7	8	9	10
1991	435	70	270	39	18	335	605	38	1810
1995	320	79	195	10	21	159	253	29	1066
1996	284	96	213	10	21	212	283	47	1166
1997	305	112	261	7	31	259	293	37	1305
1998	233	123	175	8	14	232	263	49	1097
1999	203	84	124	10	9	203	243	51	927
2000	158	66	84	12	7	197	208	39	771
2001	166	44	74	9	1	156	167	57	674
2002	118	37	78	12	3	171	136	24	579
2003	104	34	57	12	5	191	107	42	552
2004	114	16	60	1	2	187	73	24	477
2005	98	16	43	2	-	187	104	6	456

Source: Labour Bureau Shimla, Ministry of Labour and Employment

Table 36.21 - WORKMEN'S COMPENSATION

Year	Number of compensated injuries				Amount of compensation paid (Rs.'000)				
	Death	Disability		Total	Death	Disability		Total	
		Perma- nent	Tempo- rary			Perma- nent	Tempo- rary		
									2
1991		1409	1538	10597	13544	72086	24639	10369	107094
1995		231	151	892	1274	15782	4855	901	21537
1996		1050	748	2048	3846	79057	36395	19148	134601
1997		947	1391	2117	4455	121299	38626	26398	186323
1998		896	1231	42598	44725	198053	123727	249452	571232
1999		1023	1557	8747	11327	146698	81739	109526	337963
2000		1377	1507	4765	7649	193004	104783	32016	329802
2001		1346	1520	4381	7247	221595	126183	32923	380701
2002		1501	1592	3649	6742	289912	150620	28297	468829
2003		1663	1912	4136	7706	371091	222800	45075	644964
2004		1581	1662	3507	6750	328612	127335	23599	479546

Source: Labour Bureau Shimla, Ministry of Labour and Employment

Note: 1. Figures relate to compensation of injuries under Workman's Compensation Act.

2. The figures in the table above may not be strictly comparable due to difference in area covered varying response or non- response etc.

LABOUR

Table 36.22-EMPLOYMENT IN INSURANCE

('000 number)

Year	Life Insurance	General Insurance*	Total
1	2	3	4
1990-91	96.3	80.2	176.5
1993-94	123.8	86.3	210.0
1994-95	121.4	84.6	206.0
1995-96	125.7	84.7	210.4
1996-97	126.6	85.3	211.9
1997-98	125.6	85.2	210.8
1998-99	124.4	84.4	208.7
1999-00	122.9	83.7	83.7
2000-01	120.2	83.0	203.4
2001-02	118.5	82.6	201.1
2002-03	117.1	81.3	198.4
2003-04	115.7	73.4	189.1
2004-05	114.6	72.2	186.8
2005-06	113.2	71.8	185.0
2006-07	113.7	71.0	184.7

Source : Life Insurance Corporation of India
2. General Insurers' (Public Sector) Association of India

* Total Strength of employees of four public sector non-life general insurance(GIPSA) companies namely New India Assurace Co. Ltd, The National Insurance Co. Ltd, The Oriental Insurance Co. Ltd, United India Insurance Co. Ltd.

Table 36.23-EMPLOYMENT IN BANKS

('000 number)

Year	Scheduled banks				Non-scheduled banks		Regional Rural Banks		Reserve Bank of India	Grand Total
	No. of banks		No. of employees		No. of banks	No. of employees	No. of banks	No. of employees	No. of employees	No. of employees
	Indian	Foreign	Indian	Foreign						
1	2	3	4	5	6	7	8	9	10	11
1990-91	50	19	912	11	3	0.6	196	66	34	1023.6
1993-94	52	23	946	13	4	..	196	67	33	..
1994-95	62	27	950	13	3	..	196	67	33	..
1995-96	61	33	954	14	2	..	196	68	33	..
1996-97	61	39	950	14	2	..	196	69	33	..
1997-98	61	42	949	15	1	..	196	70	33	..
1998-99	61	44	948	15	1	..	196	70	32	..
1999-00	59	42	940	14	196	70	32	..
2000-01	58	42	848	13	196	65	31	..
2001-02	58	40	824	12	4	..	196	65	30	..
2002-03	58	36	824	12	4	..	196	65	29	..
2003-03	57	33	805	11	5	..	196	66	25	..
2004-05	58	31	822	13	4	..	196	66	23	..
2005-06	56	29	819	17	133	64	22	..

Source: Reserve Bank of India

Note: Number of employees of Reserve Bank of India is as on December 31 of the respective financial year and, for others, it is as on March 31 of the corresponding financial year.

LABOUR

Table 36.24-EMPLOYMENT IN PORTS
(Employment in Major, Minor and Intermediate Ports)

Maritime/State	(number)						
	1991#	2000	2001	2002	2003	2004	2005
1	2	3	4	5	6	7	8
Major Ports (as on 31st March)							
Kolkata (1)	24645	16550	14594	13748	12621	11836	11099
Paradip	5014	4182	4116	3618	3513	3407	3306
Visakhapatnam	11686	9108	6009	6345	6227	5889	5550
Chennai	12076	12375	12251	10886(a)	11172(a)	10329(a)	8842(a)
Tuticorin (b)	2397	4007	3744	3087	2963	2788	2589
Cochin (a)	5750	5328	5349	4449	4414	4353	3959
New Mangalore (c)	1439	2493	2421	2274	2220	2124	1985
Mormugao	3804	4533(a)	4465(a)	3749(a)	3556(a)	3385(a)	3243(a)
J.L Nehru	1324	1808	1833	1836	1820	1810	1791
Mumbai (a)	28886	31368	23790	22699	22217	21480	19388
Kandla	5164	4258	4304	4172	3929	3788	3574
Ennore	-	-	-	16	17	17	21
Total	102185	96010	83771	76879	74669	71206	65347
Minor & Intermediate Ports in the Maritime States (as on 31st March)							
Maritime/State	1991	2000	2001	2002	2003	2004	2005
Andhra Pradesh	115	104	107	107	109	62	66
Tamil Nadu	264	177	110	110	110	73	89
Pondicherry	119	92	92	92	79	79	75
Karnataka	257	80	71	71	99	76	105
Kerala	1349	271	354	354	316	257	121
Maharashtra	230	173	173	173	173	165	154
Gujarat	4601	2095	2441	2441	2662	2048	1816
Goa	145	147	166	166	166	139	139
Andaman & Nicobar Islands	1643	468	474	474	477	470	468
Lakshadweep	131	217	217	217	217	217	217
Daman & Diu	7	22	22	22	22	22	22
Orissa	189	194*	194*
Total	9050	4040	4421	4227	4430	3608	3272

(1) Includes Haldia Docks Complex.

(a) Includes employees of the Dock Labour Board.

(b) Includes workers of cargo handling labour pool. (TPTCHLP)

(c) Includes workers of New Mangalore port.[Cargo handling workers (Regulation of employment) Scheme 1990].

(*) As on 31-03-1995.

(#) As on 31st December.

LABOUR

Table 36.24-EMPLOYMENT IN PORTS - Concl'd.
(No.of Dock workers registered with Dock Labour Board at Major Ports)

Major Ports	(number)						
	1991	2000	2001	2002	2003	2004	2005
1	2	3	4	5	6	7	8
Kolkata Dock System	3965	2638	2247	1930	1660	1353	1034
Visakhapatnam	2193	2018	1702	1500	1473	1449	1386
Chennai	2526	2104	1833	(a)	(a)	(a)	(a)
Cochin	..	(a)	(a)	(a)	(a)	(a)	(a)
Mormugao	..	(a)	(a)	(a)	(a)	(a)	(a)
Mumbai	(a)	(a)	(a)	(a)	(a)	(a)	(a)
Kandla	1041	1030	997	931	897	862	833
Total	9725	7790	6779	4361	4030	3664	3253

Source:Transport Research Wing, Ministry of Shipping, Road Transport & Highways.

(a) It is included with the employees of the Port.

**TABLE NUMBER 36.4
FACTORY EMPLOYMENT**



**TABLE NUMBER 36.14
AVERAGE PER CAPITA ANNUAL EARNINGS OF
FACTORY EMPLOYEES**

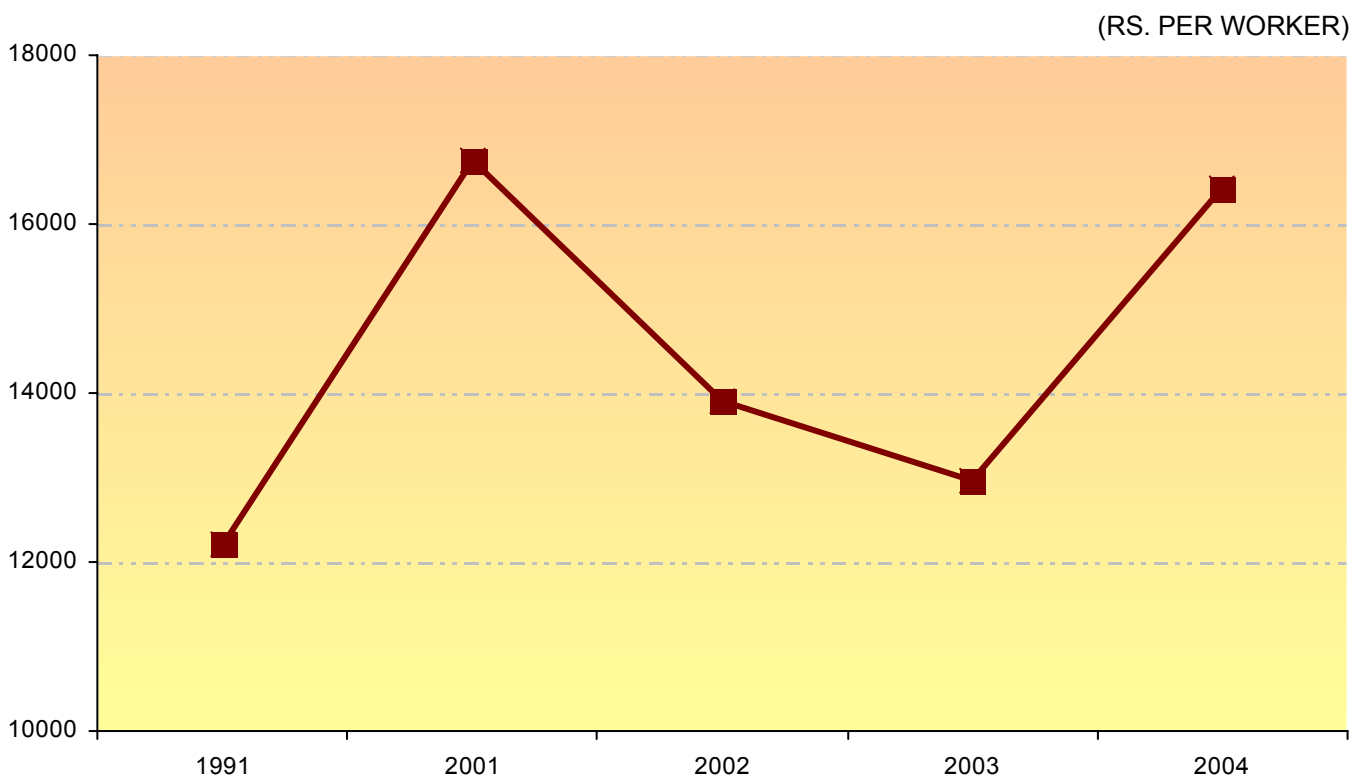


TABLE NUMBER 36.1

ESTIMATED EMPLOYMENT IN PUBLIC SECTORS

('000 NO.)

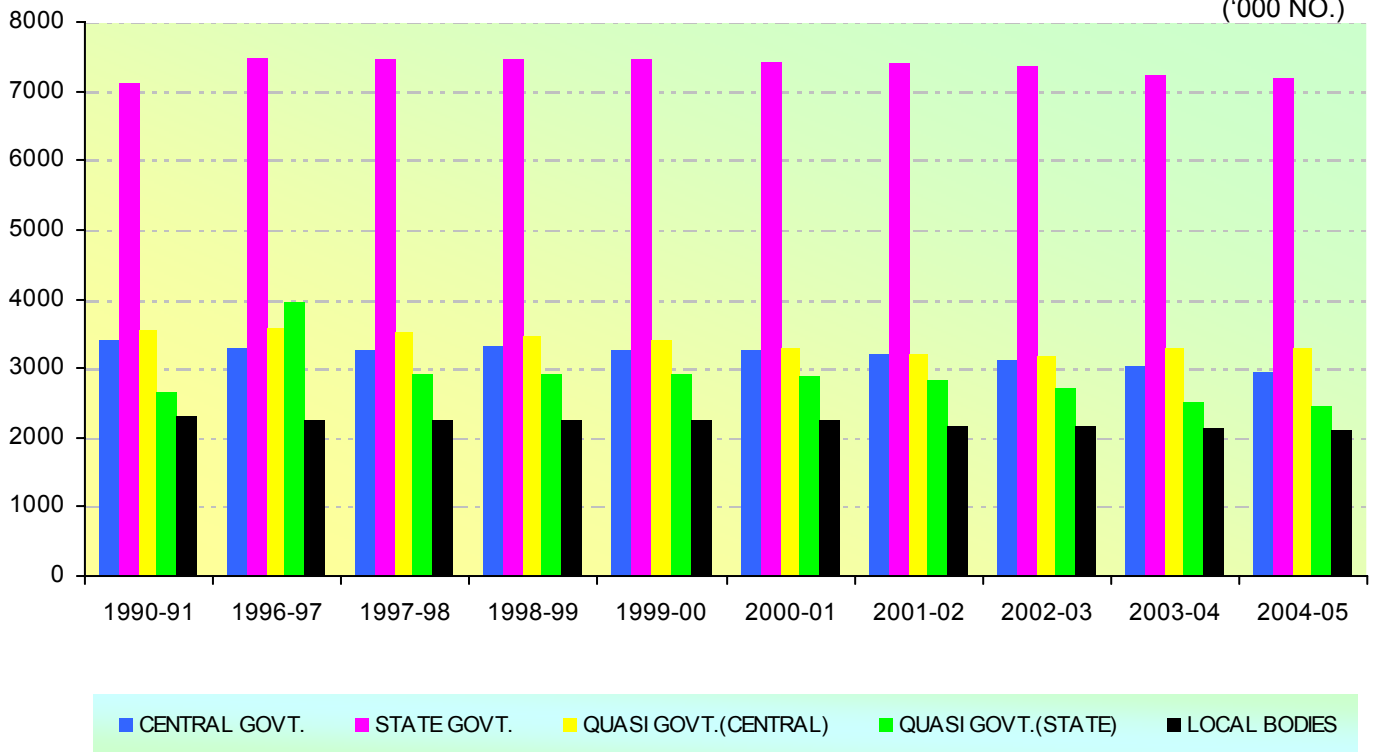


TABLE NUMBER 36.1

ESTIMATED EMPLOYMENT IN PRIVATE SECTORS

('000 NO.)

